



Redistricting Overview

San Mateo County Harbor District

Overview of District and application of
State/Federal voting rights acts

What is Districting

Definition

Districting is the process of creating election district boundaries for a jurisdiction that currently holds at-large district-wide elections, like the San Mateo County Harbor District.

The districts are only for the purposes of electing members to the board and serve no other operational purpose.

What is Redistricting

Definition

Redistricting is the process of adjusting district lines every 10 years after the release of the US Census. The well known examples are Congress and the legislature.

Within the US, redistricting has become an extremely politicized process and been the subject of more recent Supreme Court activity than any other part of our elections system.

What is Redistricting

The Gerrymander

The term Gerrymander came from a cartoon depicting a rather serpentine looking district created by Governor Elbridge Gerry in Massachusetts.

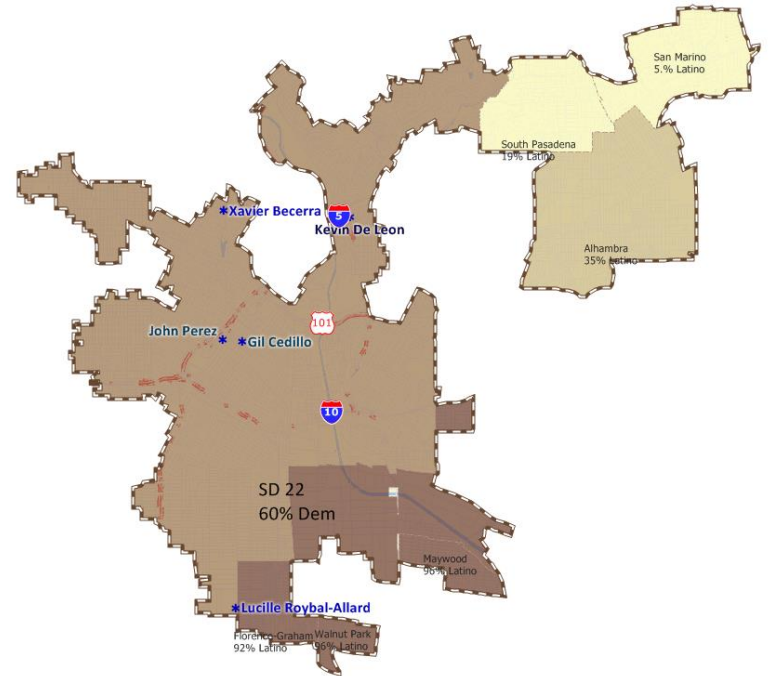


What is Redistricting

The Gerrymander

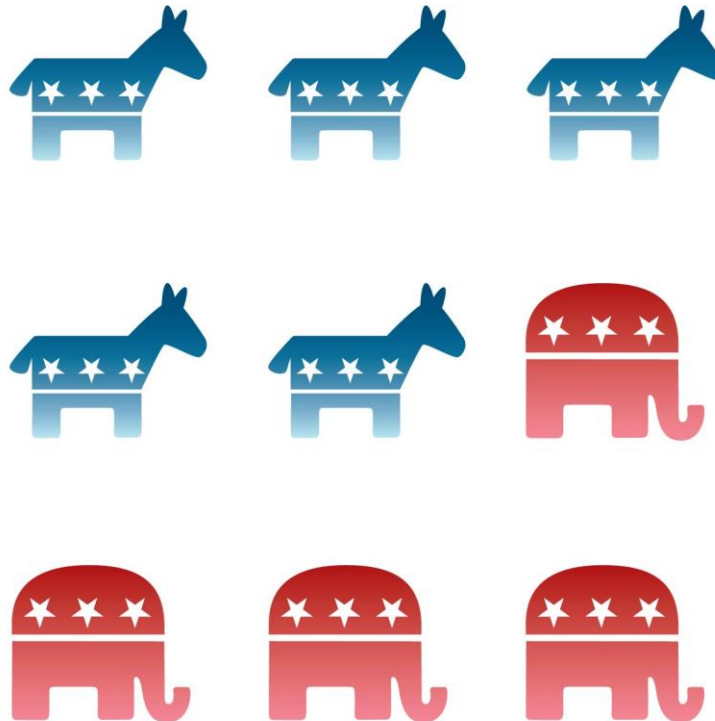
There are more recent examples of gerrymandering, even in California.

This 2001 Senate District is a great example.



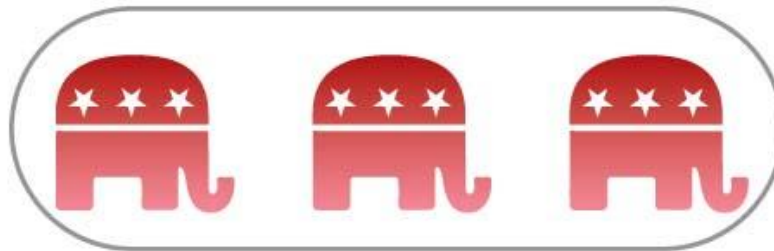
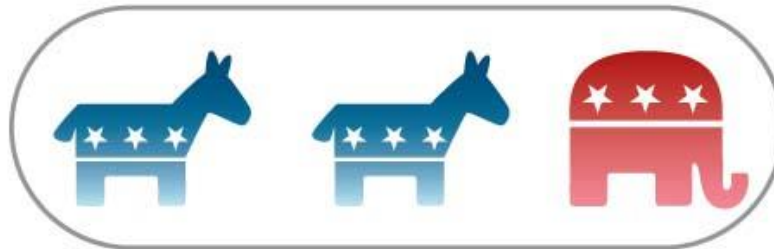
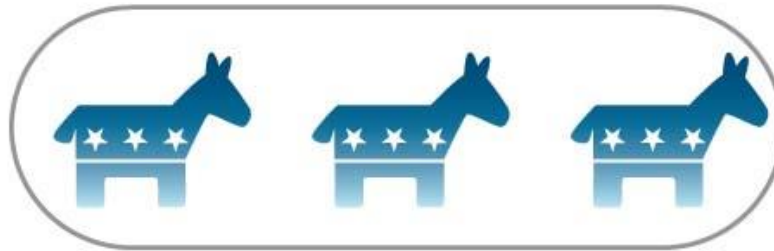
What is Redistricting

Why should anyone care?



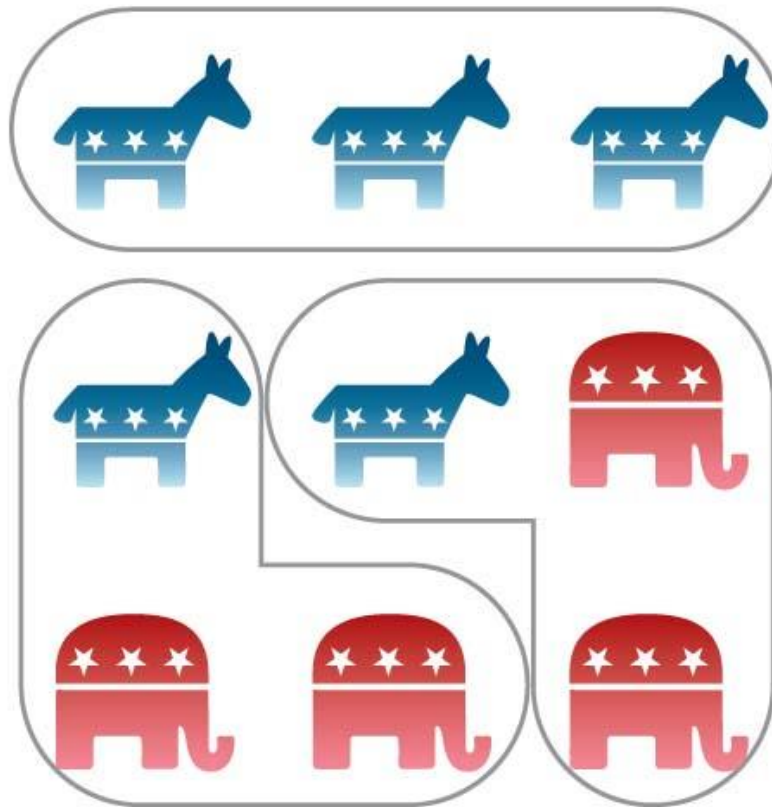
What is Redistricting

Why should anyone care?



What is Redistricting

Why should anyone care?



What is Redistricting

Why should anyone care?



In local agencies this is unlikely to be about Partisanship as much as rural v. urban; old neighborhoods vs. new, one side of town vs. another.

Traditional Redistricting Principles

Should be followed by Local Agencies

There are a number of criteria that have been used nationally and upheld by courts.

- Relatively equal size – people, not citizens
- Contiguous – districts should not hop/jump
- Maintain “*communities of interest*”
- Follow city/county/local government lines
- Keep districts compact – appearance/function

Traditional Redistricting Principles

Should be followed by Local Agencies

There are a number of criteria that have been used nationally and upheld by courts.

- **Relatively equal size – people, not citizens**
- Contiguous – districts should not hop/jump
- Maintain “*communities of interest*”
- Follow city/county/local government lines
- Keep districts compact – appearance/function

Traditional Redistricting Principles

Should be followed by Local Agencies

There are a number of criteria that have been used nationally and upheld by courts.

- Relatively equal size – people, not citizens
- **Contiguous – districts should not hop/jump**
- Maintain “*communities of interest*”
- Follow city/county/local government lines
- Keep districts compact – appearance/function

Traditional Redistricting Principles

Should be followed by Local Agencies

There are a number of criteria that have been used nationally and upheld by courts.

- Relatively equal size – people, not citizens
- Contiguous – districts should not hop/jump
- **Maintain “communities of interest”**
- Follow city/county/local government lines
- Keep districts compact – appearance/function

Communities of Interest

Bringing like people together for representation

What is a community of interest includes ethnic and language minorities and other groups.

- Communities covered by the Voting Rights Act
 - Latinos
 - Asians
 - African Americans

Communities of Interest

Bringing like people together for representation

A community of interest includes ethnic and language minorities and other groups.

- Other Communities, for example are:
 - People living near an industry (port, airport, downtown)
 - Senior Citizen communities
 - Coastal communities
 - Environmental Interests
 - Homeowners or Renters

Traditional Redistricting Principles

Should be followed by Local Agencies

There are a number of criteria that have been used nationally and upheld by courts.

- Relatively equal size – people, not citizens
- Contiguous – districts should not hop/jump
- Maintain “*communities of interest*”
- **Follow city/county/local government lines**
- Keep districts compact – appearance/function

Traditional Redistricting Principles

Should be followed by Local Agencies

There are a number of criteria that have been used nationally and upheld by courts.

- Relatively equal size – people, not citizens
- Contiguous – districts should not hop/jump
- Maintain “*communities of interest*”
- Follow city/county/local government lines
- **Keep districts compact – appearance/function**

What is the CVRA?

The California Voting Rights Act is a state law that prohibits the use of At-Large election systems in local government if there is racially polarized voting.

“At-Large” is defined as anything other than a system in which an elected official lives in a district, and is only elected by members of that district.

“Racially Polarized Voting” is determined through an analysis which quantifies the amount of voting which can be shown to be correlated to race.

What is the CVRA?

The California Voting Rights Act takes the principles of the Federal Voting Rights Act and expands it regarding districted elections in two key ways:

While Federal law uses “majority minority” districts as a standard for vulnerability, the CVRA only requires “ability to influence.”

The CVRA requires that plaintiffs get full reimbursement for legal fees associated with any successful challenge.

What is the CVRA?

The California Voting Rights Act takes the principles of the Federal Voting Rights Act and expands it regarding districted elections in two key ways:

While Federal law uses “majority minority” districts as a standard for vulnerability, the CVRA only requires “ability to influence.”

The CVRA requires that plaintiffs get full reimbursement for legal fees associated with any successful challenge. ***These can be lessened or eliminated if the district follows a strict and prompt process for districting.***

What is the CVRA?

The California Voting Rights Act has seen several major and costly legal battles.

- \$110,000 (Gomez v. Hanford Joint Union School District)
- \$3 million (Sanchez v. City of Modesto)
- \$1.2 million (Rey v. Madera Unified School District)
- \$500,000 (Avitia, et al. v. Tulare Local Healthcare District)

It is important to note that these amounts do not account for the fees paid to the entity's own attorneys

How does CVRA Analysis Work

What will Redistricting Partners Look For?

The CVRA requires boards with “at-large” systems to convert to “districted” system that would empower subgroups.

- Concentrations of minority subgroups
- *Racially polarized voting*
- Would election-by-district empower subgroups to “influence” elections?

San Mateo County Harbor District

District and Seat Size

The San Mateo County Harbor District has five board seats, elected at-large.

- Population of entire district (based on preliminary mapping) is just over 780,000.
- Each district would be a target population of approximately 144,000 based on the 2010 Census.
- With a commonly allowed maximum deviation of 5% from largest to smallest district, each seat would be within approximately 140,000 to 147,000.

San Mateo County Harbor District

City Populations

The San Mateo County Harbor District comprises several cities and towns recognized by the US Census.

Daly City	101,194
San Mateo	97,207
Redwood City	76,815
Palo Alto	64,408
South San Francisco	63,632
San Bruno	41,114
Pacifica	37,234
Menlo Park	32,032
Foster City	30,567
Burlingame	28,806
San Carlos	28,406
East Palo Alto	28,155
Belmont	25,844
Millbrae	21,532
Half Moon Bay	11,324
Brisbane	4,282
Hillsborough	10,825
Atherton	6,914
Woodside	5,287
Portola Valley	4,353
Colma	1,792

San Mateo County Harbor District

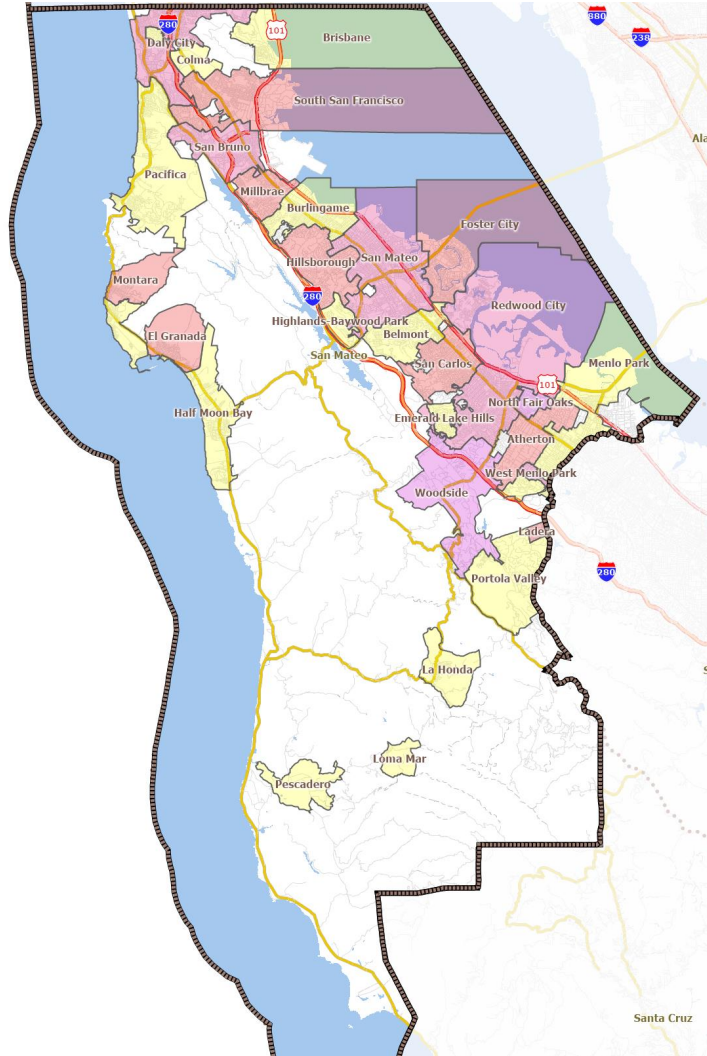
City Populations

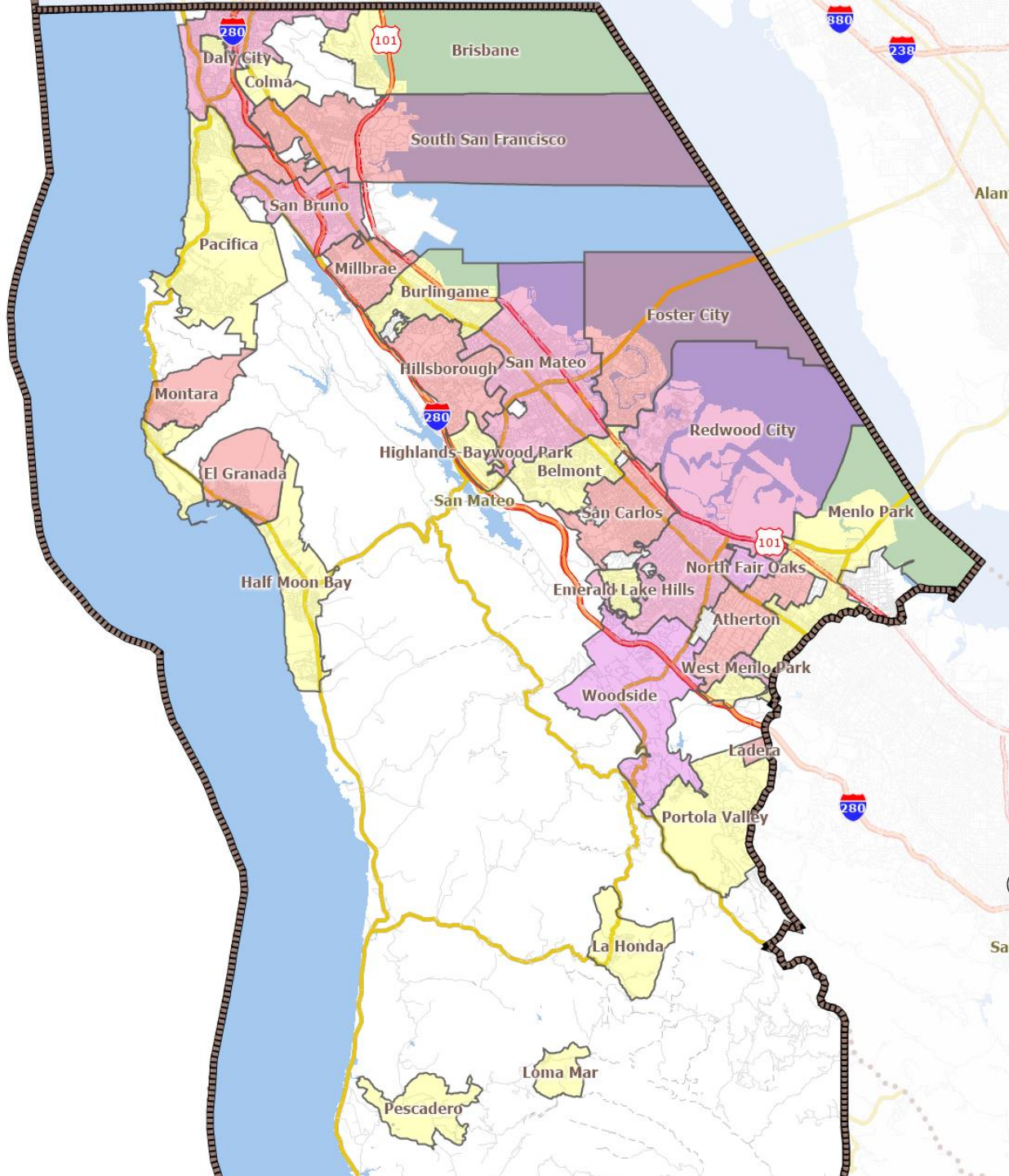
The San Mateo County Harbor District also includes several more “Census designated places” which are communities within the county.

North Fair Oaks	14,687
El Granada	5,467
Broadmoor	4,418
Emerald Lake Hills	4,278
Highlands-Baywood Park	4,027
West Menlo Park	3,659
Moss Beach	3,103
Montara	2,909
Ladera	1,426
La Honda	928
Pescadero	643
Loma Mar	113

San Mateo County Harbor District

City Map



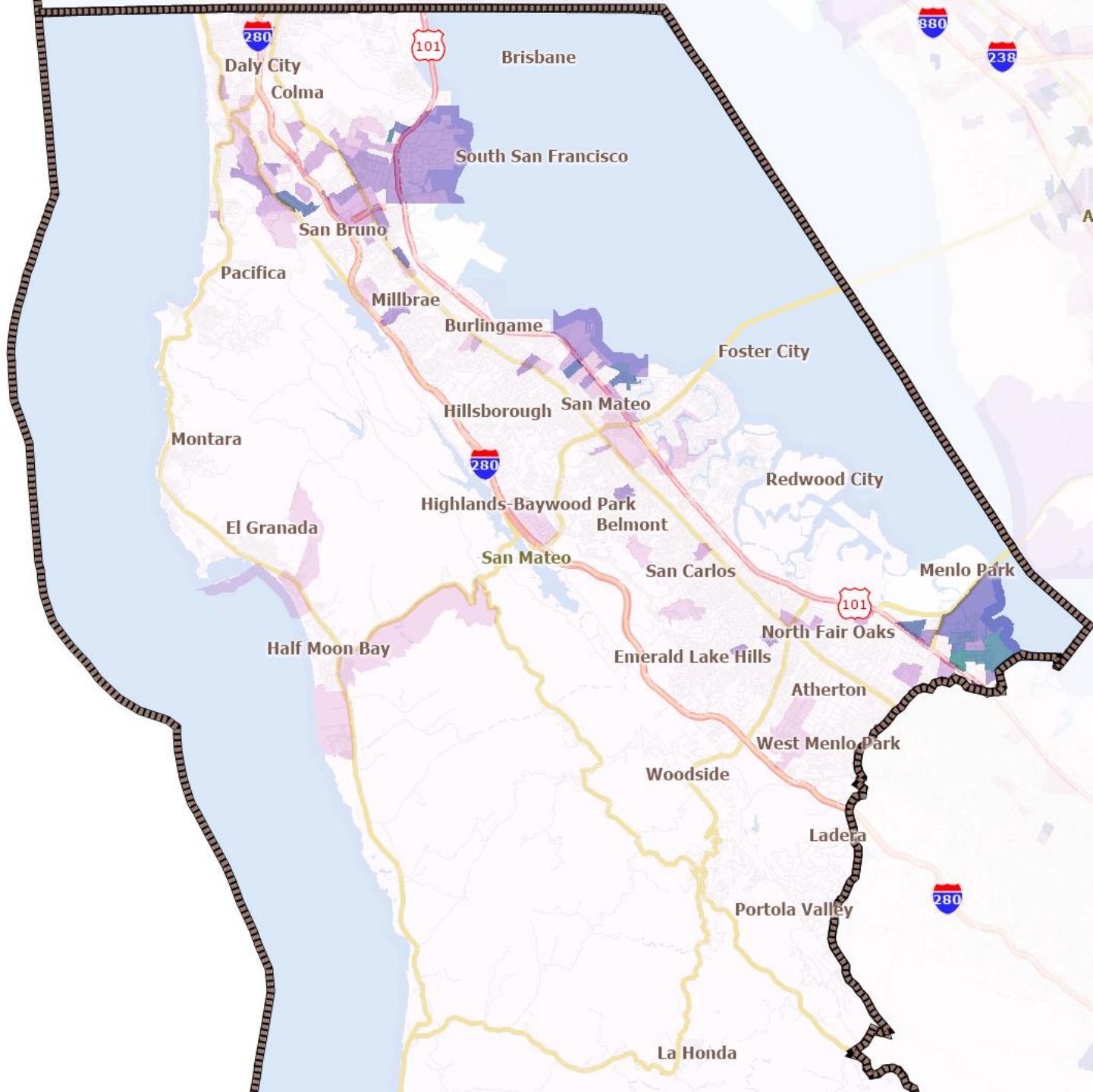


San Mateo County Harbor District

Preliminary Findings

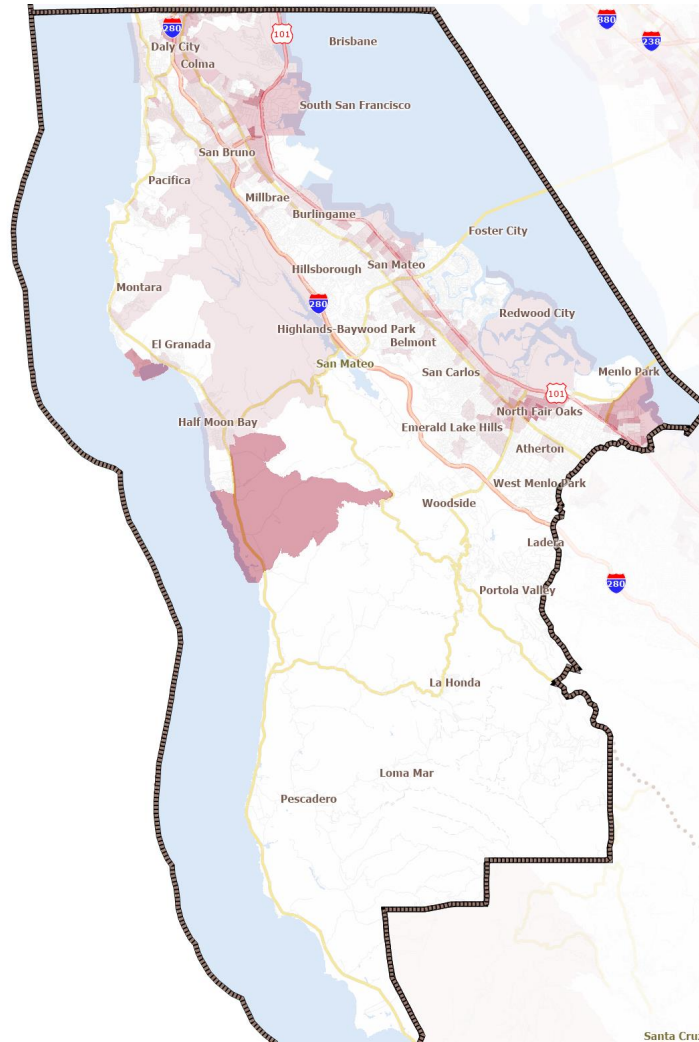
There are densities of Latino and Asian population that will need to be considered in line drawing process.

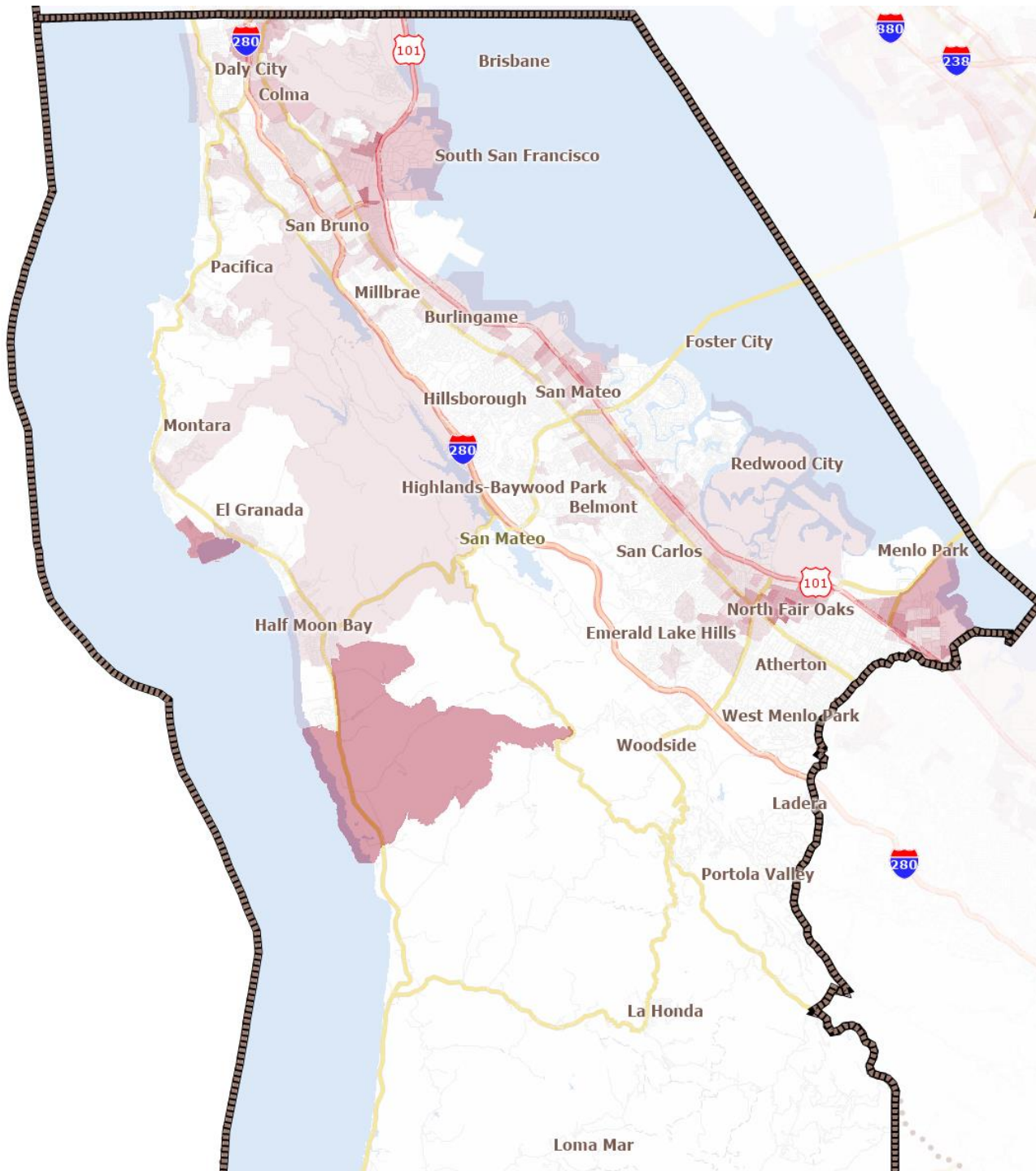
- For ethnic populations we are concerned with the “Citizen Voting Age Population” (CVAP) as calculated by the US Census in annually through the American Community Survey.
- Base ethnicity of the district shows 25% Asian and 17% Latino CVAP. However, these populations are not evenly distributed - there are strong concentrations of each in parts of the district.
- *There is a 3% African American population, but not particularly focused in one part of the district.*



San Mateo County Harbor District

Latino CVAP Map





San Mateo County Harbor District

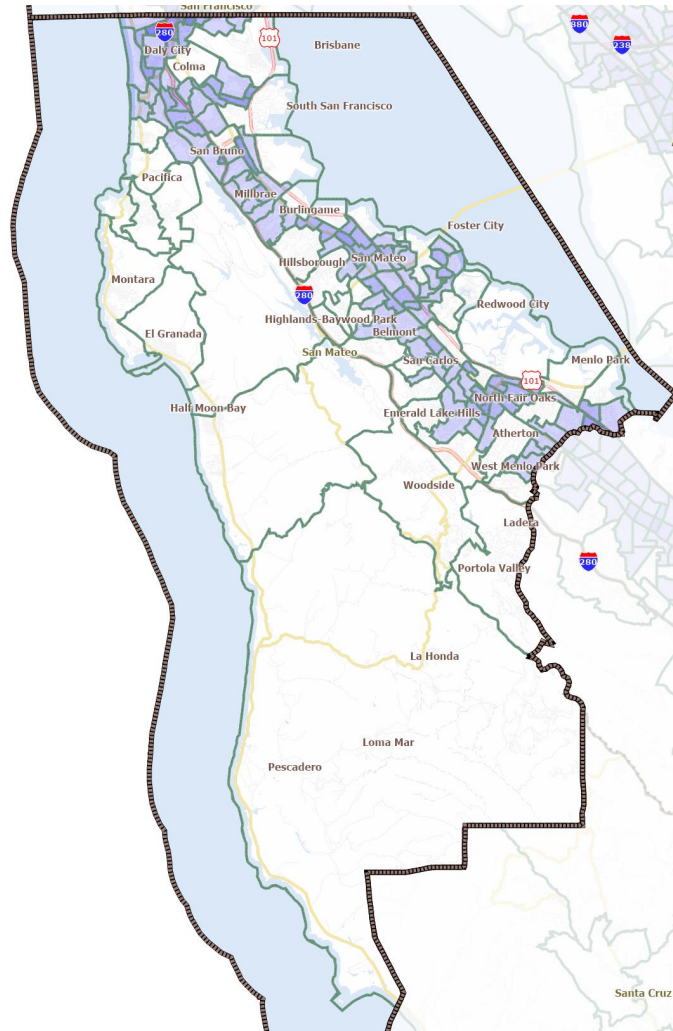
Population Density

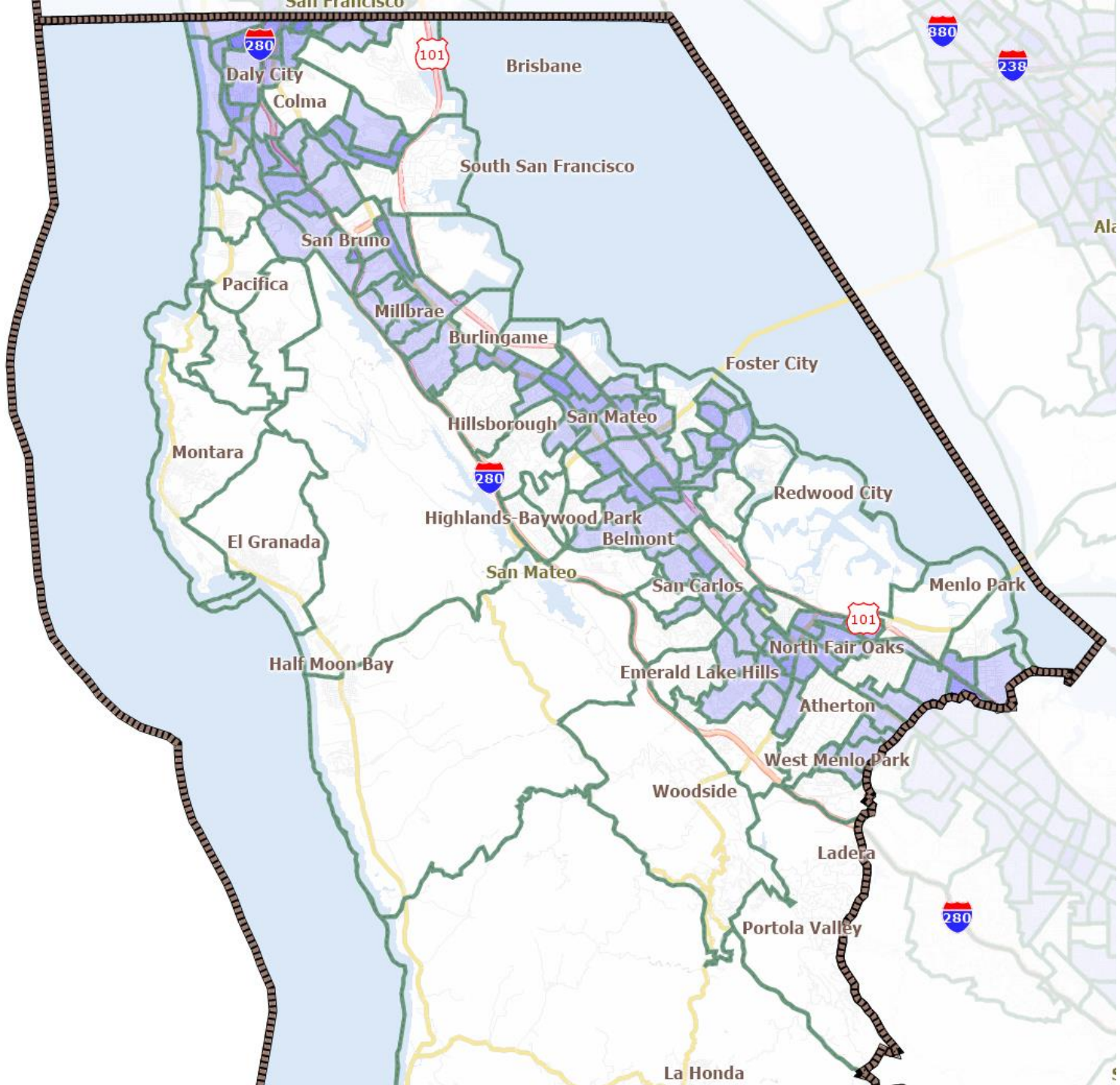
The population within the county is primarily in a set of urban cores, with some large areas with sparse population.

- Low density, particularly in the southern half of the county.
- Most population within the 101 / 280 corridor.
- Higher density districts force choices within a city, while larger districts require decisions about what communities or cities should be joined, even across larger geography.

San Mateo County Harbor District

Density Map





San Mateo County Harbor District

Steps Completed

The initial steps taken have included community engagement, building datasets and draft plans.

- Creation of three plans using traditional redistricting criteria based on experience and input.
- Analysis of plan provided by public input and analysis of plan used by San Mateo County Supervisors.
- Three public hearings with videotaped recordings and public access.

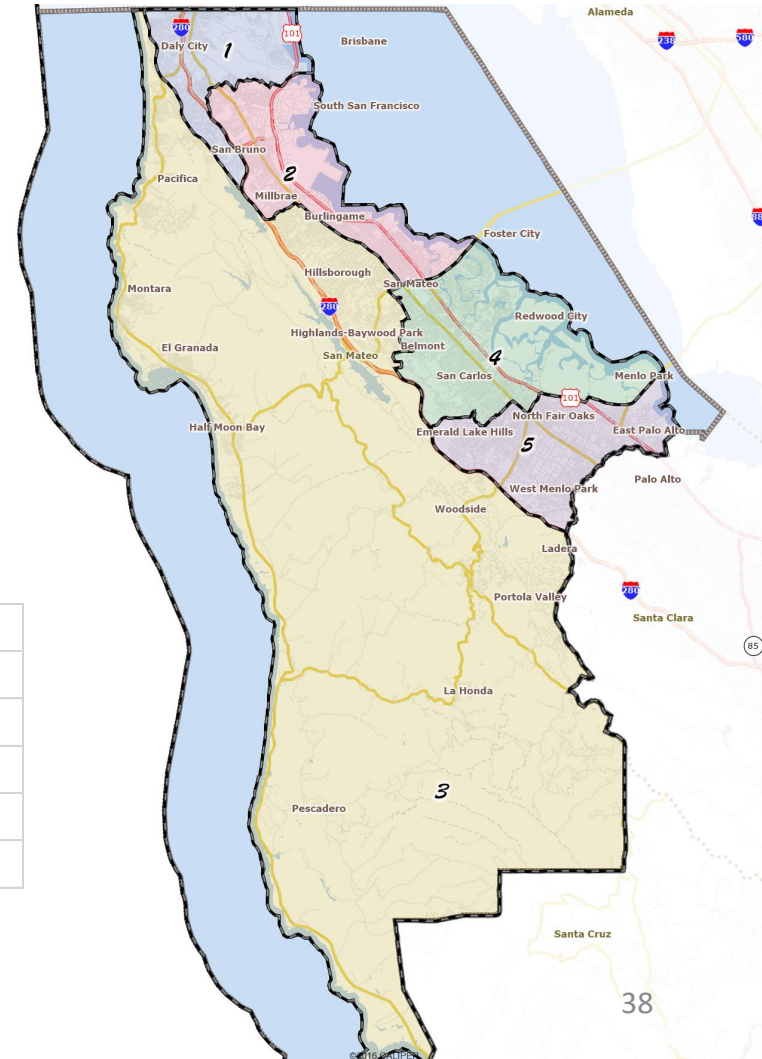
San Mateo County Harbor District

PLAN A

SEAT	Population	Deviation		CVAP	
1	141,880	(1,810)	-1%	96,830	68%
2	142,498	(1,192)	-1%	91,790	64%
3	145,254	1,564	1%	106,049	73%
4	146,271	2,581	2%	97,476	67%
5	142,548	(1,142)	-1%	81,155	57%

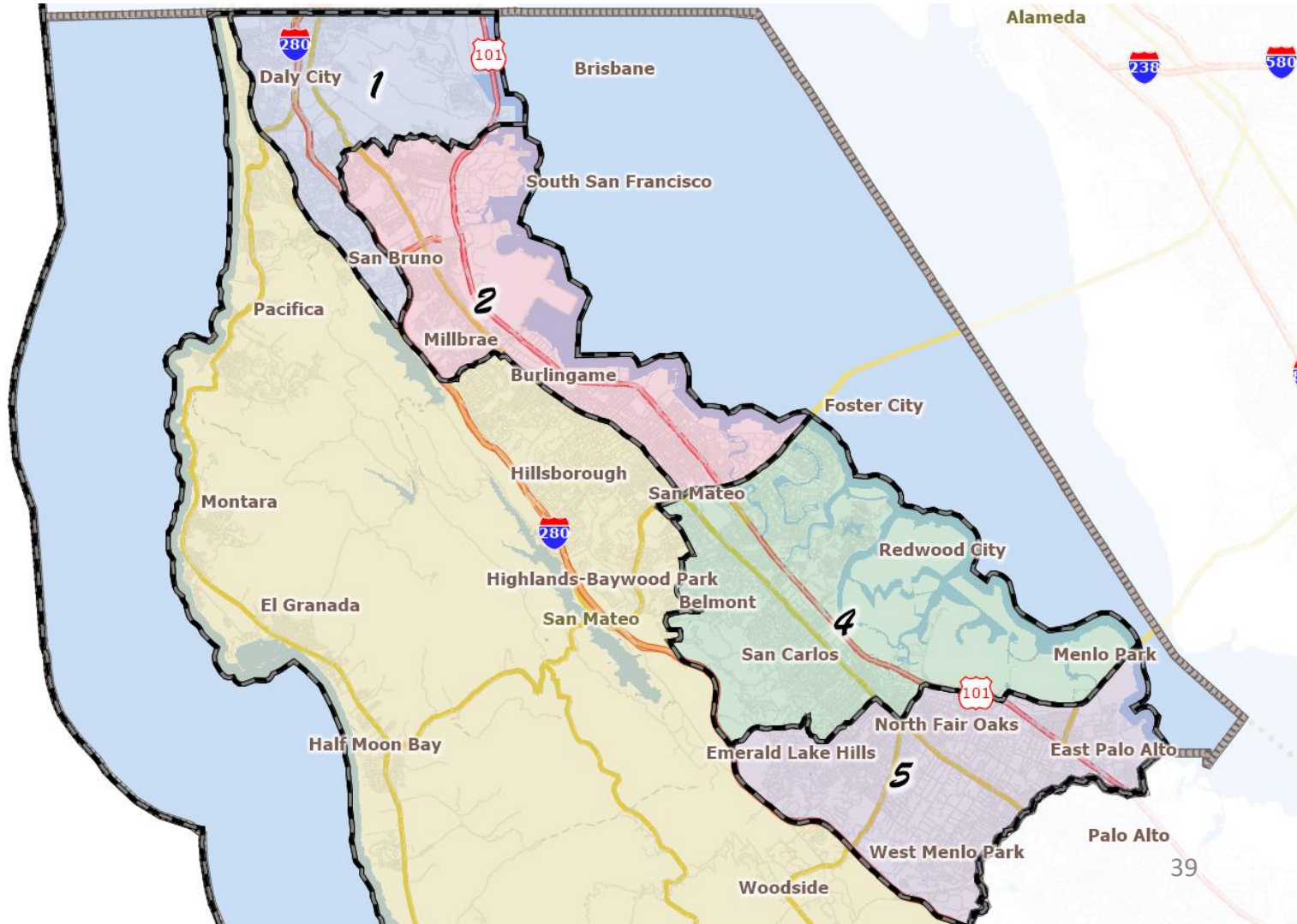
SEAT	ASIAN CVAP		LATINO CVAP		BLACK CVAP	
1	51,504	53%	17,304	18%	3,210	3%
2	22,050	24%	21,358	23%	2,407	3%
3	20,234	19%	11,599	11%	1,837	2%
4	19,314	20%	11,428	12%	2,217	2%
5	6,860	8%	19,001	23%	5,206	6%

CVAP: "Citizen Voting Age Population"



San Mateo County Harbor District

PLAN A



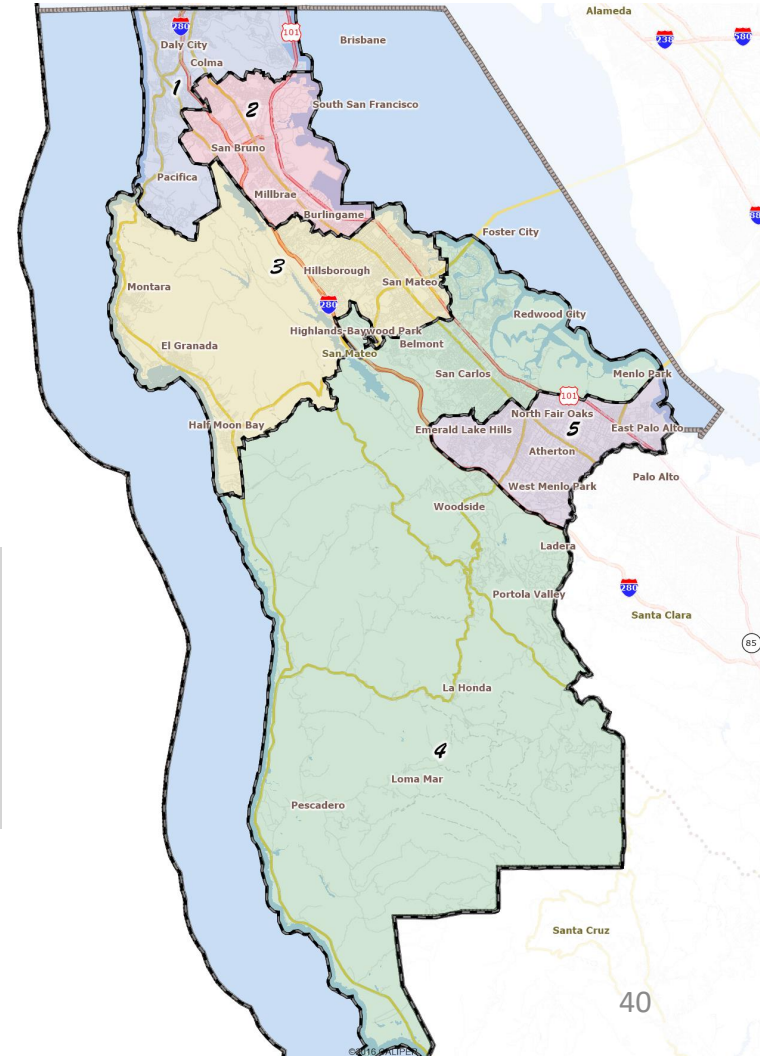
San Mateo County Harbor District

Plan B

	Population	Deviation		CVAP	
1	145,504	1,814	1%	99,348	68%
2	145,275	1,585	1%	99,987	69%
3	145,871	2,181	2%	99,041	68%
4	139,253	(4,437)	-3%	93,769	67%
5	142,548	(1,142)	-1%	81,155	57%

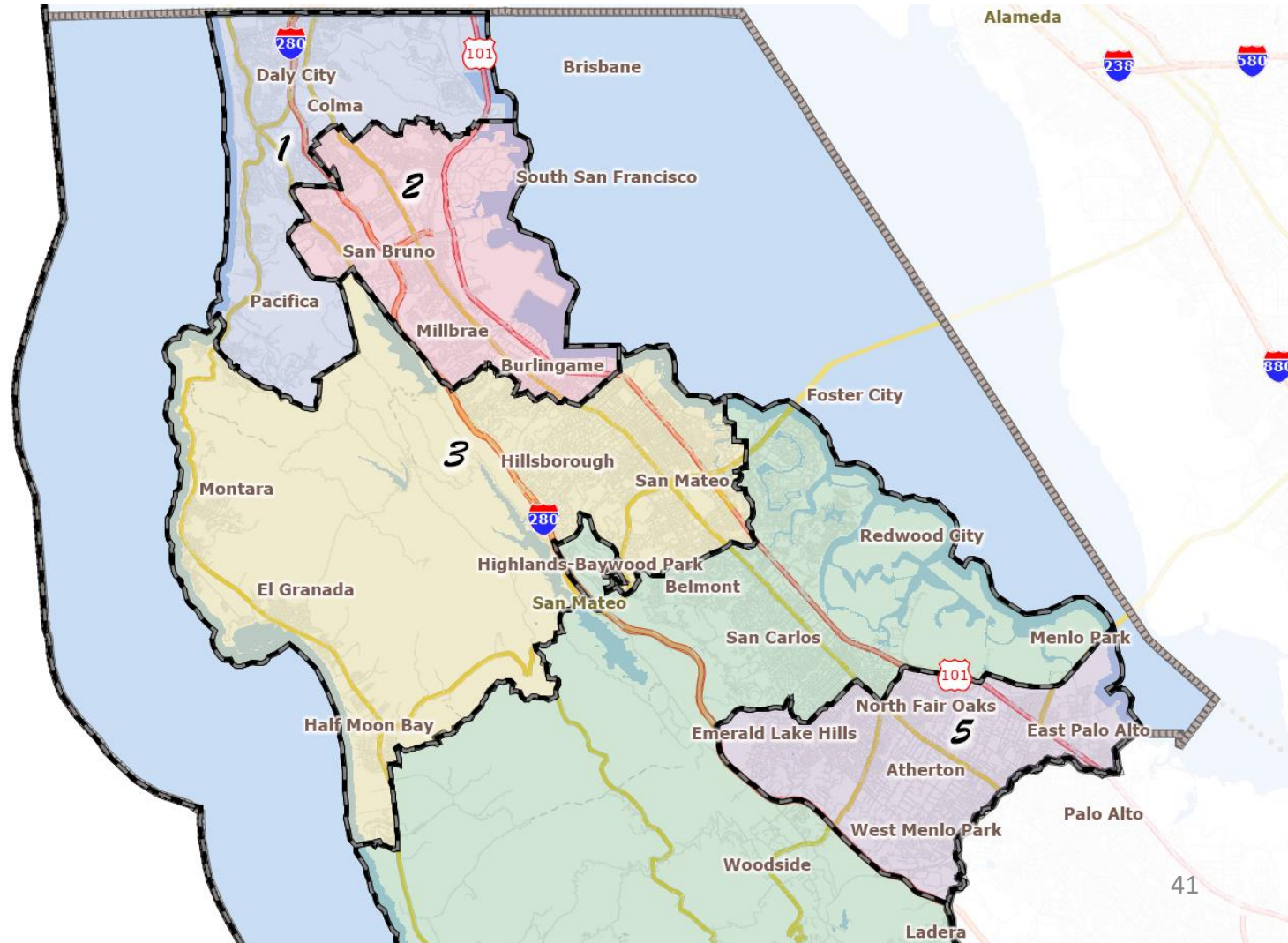
	ASIAN CVAP		LATINO CVAP		BLACK CVAP	
1	46,976	47%	17,051	17%	3,613	4%
2	32,488	32%	20,979	21%	2,135	2%
3	16,422	17%	14,261	14%	1,884	2%
4	17,216	18%	9,398	10%	2,039	2%
5	6,860	8%	19,001	23%	5,206	6%

CVAP: “Citizen Voting Age Population”



San Mateo County Harbor District

Plan B



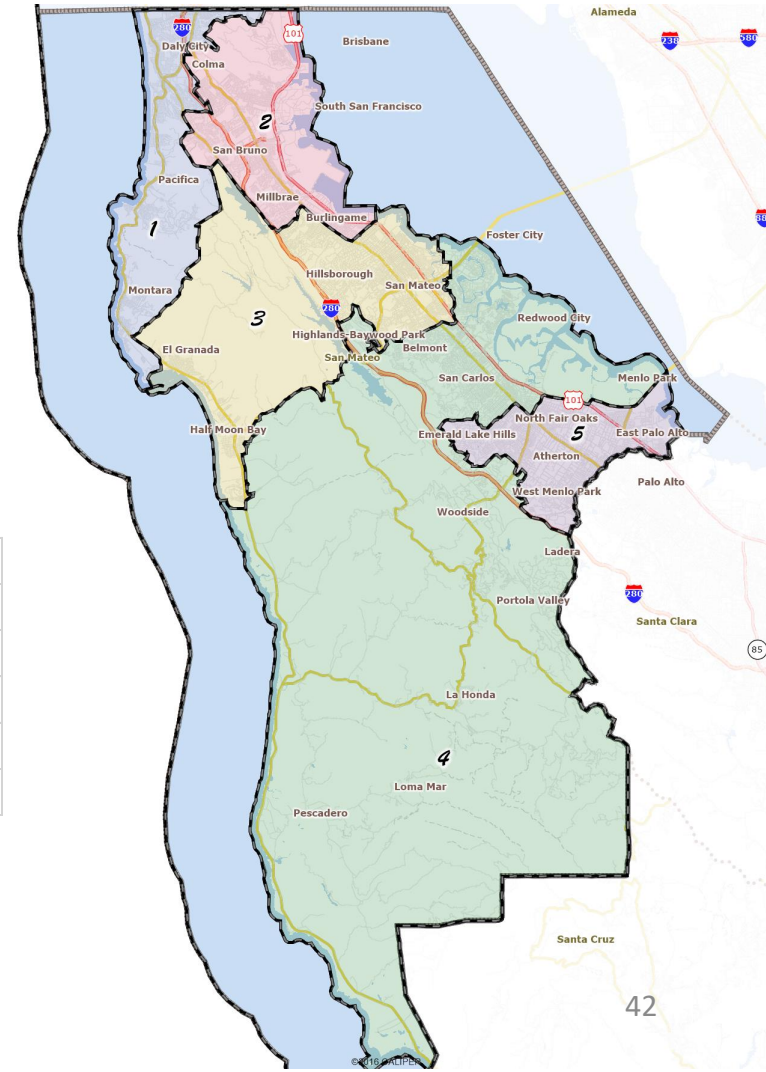
San Mateo County Harbor District

Plan C

	Population	Deviation		CVAP	
1	147,171	3,481	2%	101,181	69%
2	146,794	3,104	2%	100,685	69%
3	143,138	(552)	0%	96,725	68%
4	140,515	(3,175)	-2%	94,679	67%
5	140,833	(2,857)	-2%	80,030	57%

	ASIAN CVAP		LATINO CVAP		BLACK CVAP	
1	44,870	44%	17,057	17%	3,464	3%
2	33,807	34%	21,464	21%	2,252	2%
3	17,209	18%	14,004	14%	1,922	2%
4	17,370	18%	9,249	10%	2,033	2%
5	6,706	8%	18,916	24%	5,206	7%

CVAP: "Citizen Voting Age Population"



San Mateo County Harbor District

Plan C



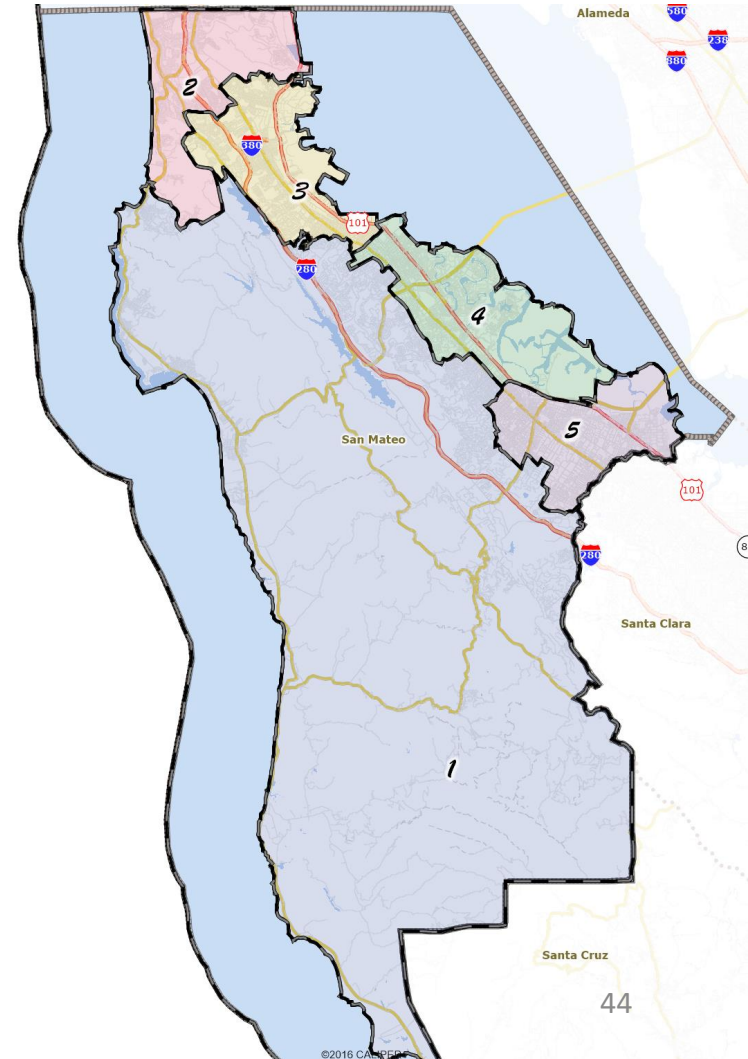
San Mateo County Harbor District

Plan D
(Sarsfield / Public Submission)

	Population	Deviation		CVAP	
1	142,409	(1,281)	-1%	104,453	73%
2	149,136	5,446	4%	101,313	68%
3	143,548	(142)	0%	97,991	68%
4	141,043	(2,647)	-2%	91,693	65%
5	142,315	(1,375)	-1%	77,850	55%

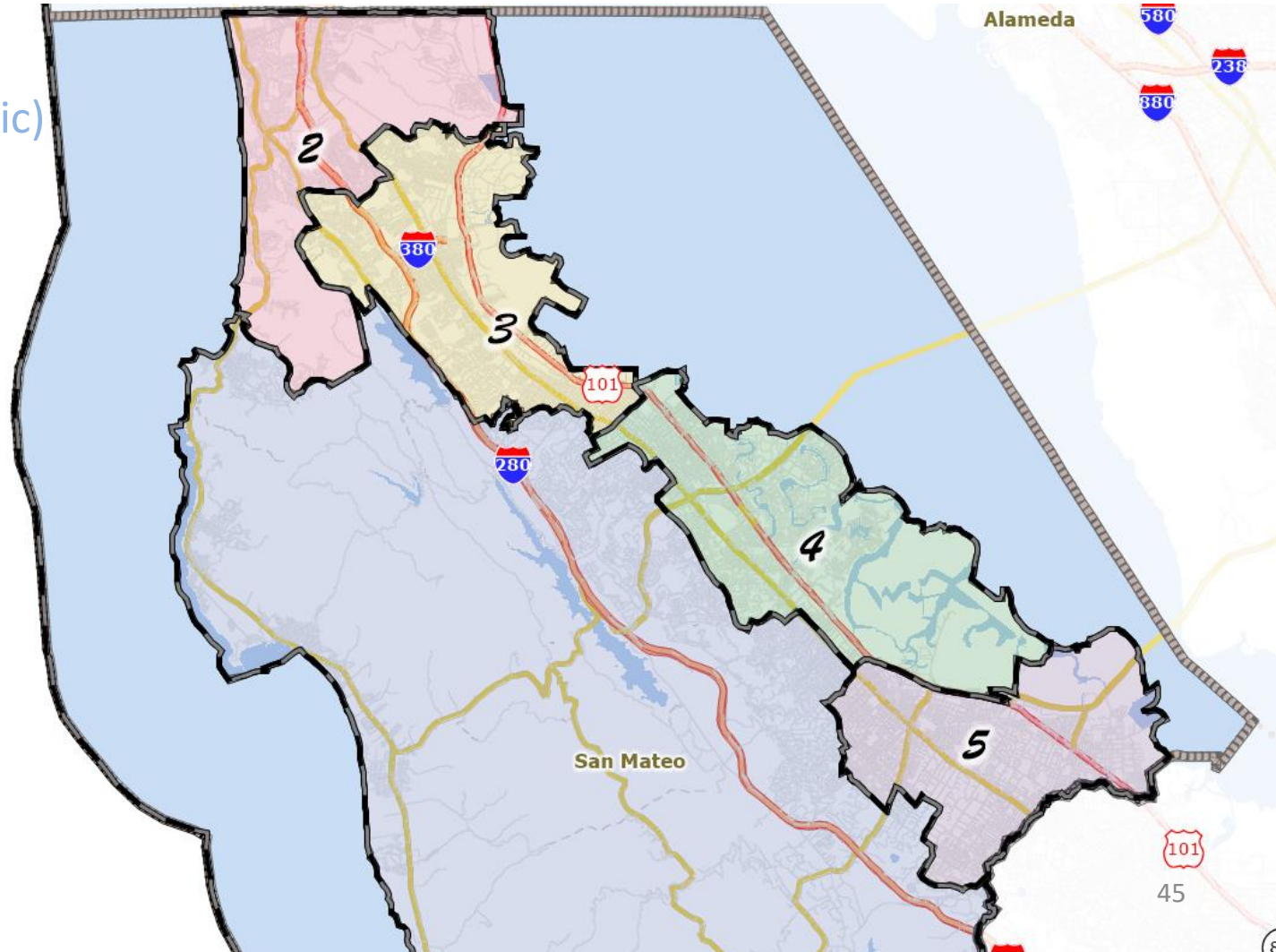
	ASIAN CVAP		LATINO CVAP		BLACK CVAP	
1	12,459	12%	9,837	9%	950	1%
2	48,964	48%	18,339	18%	3,703	4%
3	31,151	32%	19,242	20%	2,021	2%
4	20,691	23%	13,428	15%	2,690	3%
5	6,697	9%	19,844	25%	5,513	7%

CVAP: "Citizen Voting Age Population"



San Mateo County Harbor District

Plan D
(Sarsfield/Public)



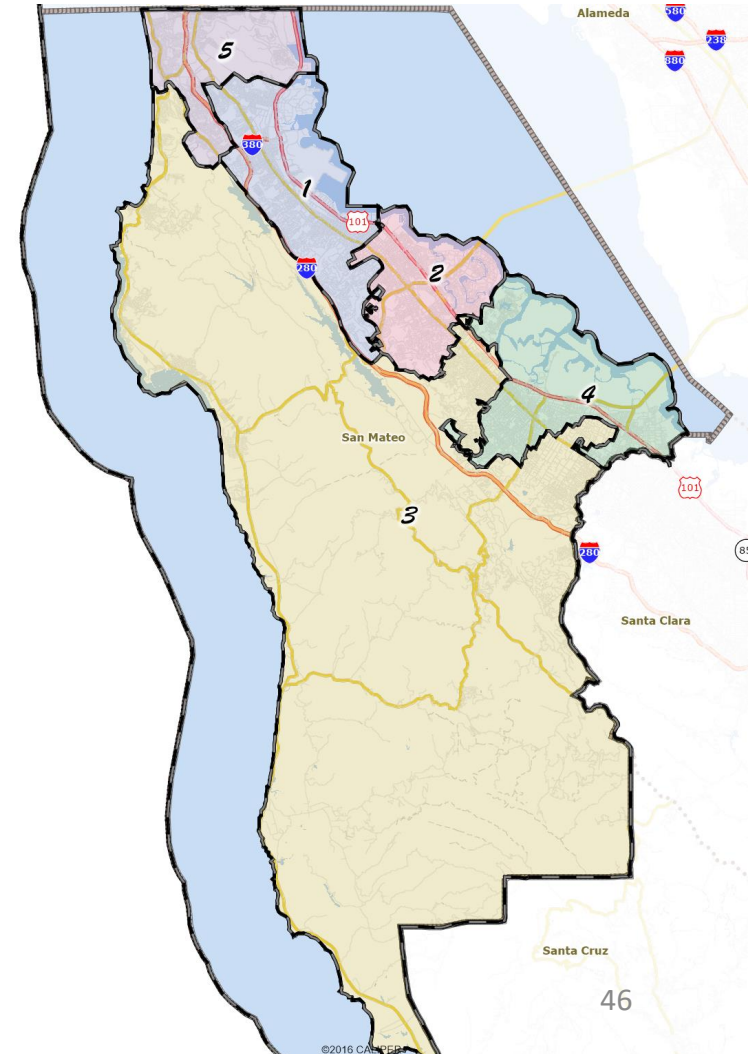
San Mateo County Harbor District

San Mateo County Supervisor Districts

	Population	Deviation		CVAP	
1	142,409	(1,281)	-1%	104,453	73%
2	149,136	5,446	4%	101,313	68%
3	143,548	(142)	0%	97,991	68%
4	141,043	(2,647)	-2%	91,693	65%
5	142,315	(1,375)	-1%	77,850	55%

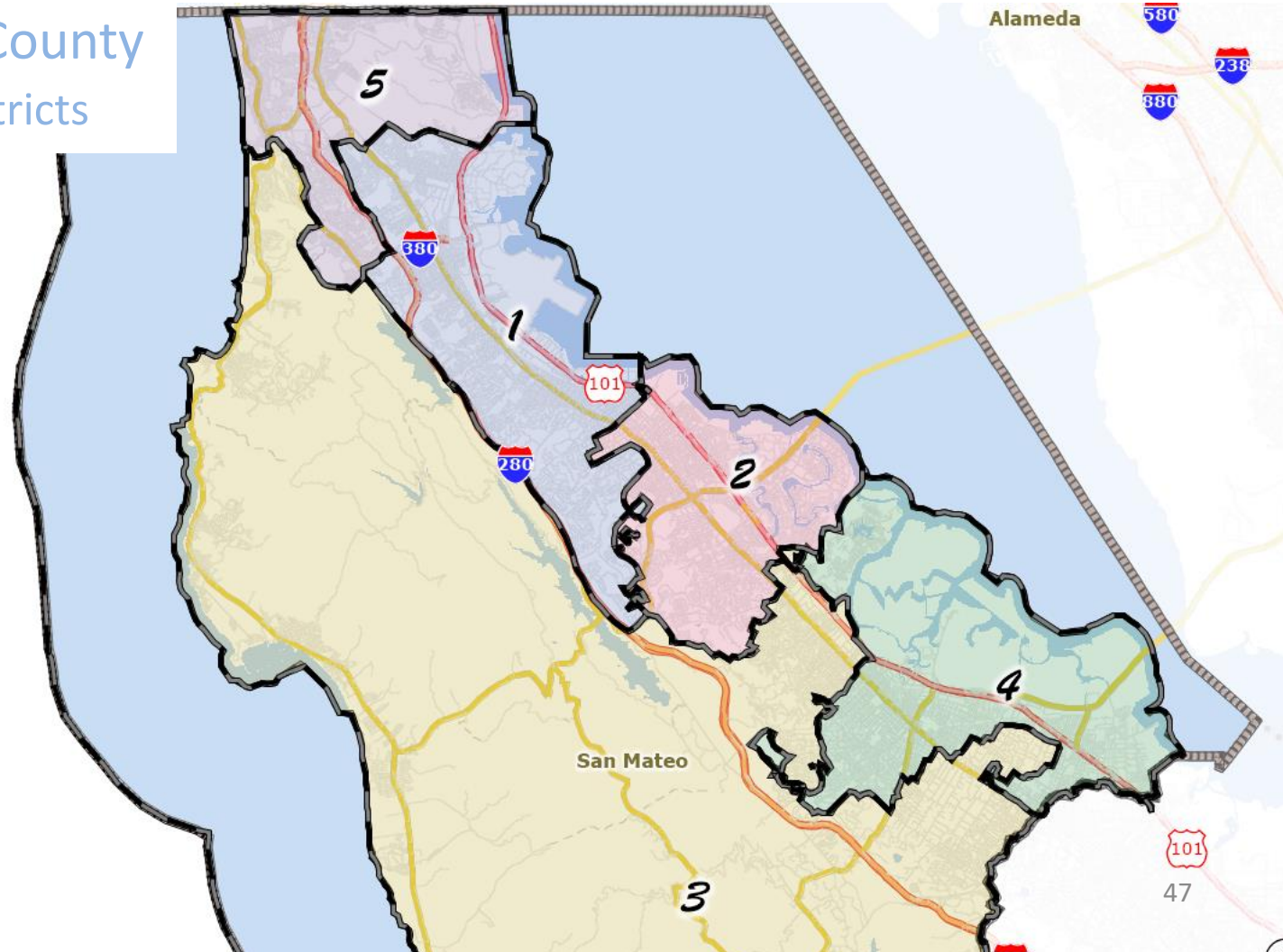
	ASIAN CVAP		LATINO CVAP		BLACK CVAP	
1	25,698	27%	18,361	19%	1,480	2%
2	21,429	22%	13,302	13%	2,565	3%
3	11,998	11%	11,489	11%	1,625	2%
4	7,622	10%	20,877	28%	5,645	7%
5	53,215	55%	16,661	17%	3,562	4%

CVAP: "Citizen Voting Age Population"



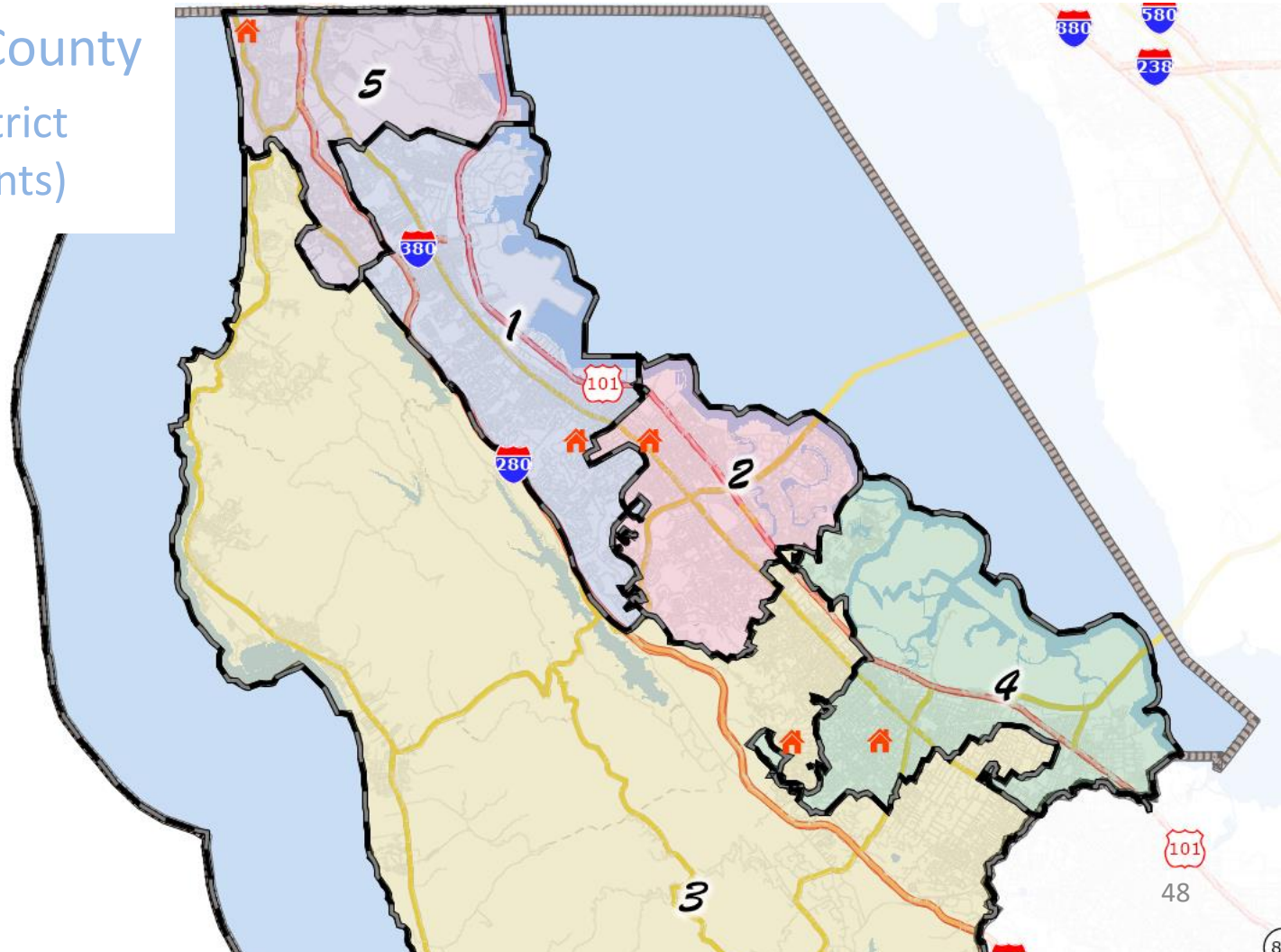
San Mateo County Harbor District

San Mateo County
Supervisor Districts



San Mateo County Harbor District

San Mateo County
Supervisor District
(with incumbents)



San Mateo County Harbor District

Next Steps

The next steps would be to continue to engage with the community and seek comment on maps.

- Continue to hear what are potential communities of interest within the San Mateo County Harbor District.
- Learn more about how public and board members view maps in order to narrow down options for adoption.
- Show the community desire for public input in the process while making progress toward completion.