

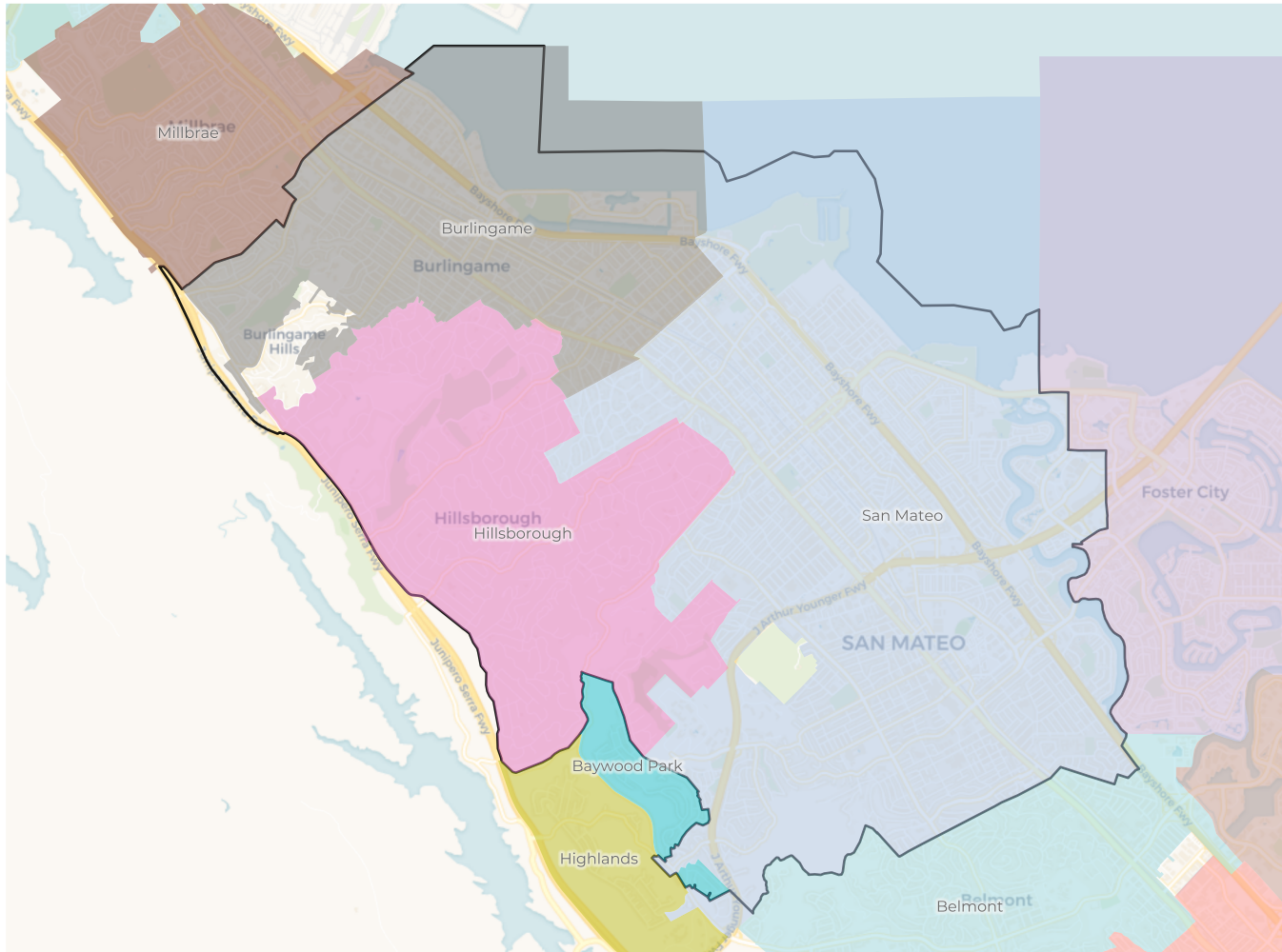
2020 Census

	A	B	C	D	E
Population	149,811	154,901	158,690	146,290	155,725
Deviation	-3,272	1,818	5,607	-6,793	2,642
Deviation %	-2.1%	1.2%	3.7%	-4.4%	1.7%
Other	74,957	46,452	56,031	75,077	78,351
Other %	50.0%	30.0%	35.3%	51.3%	50.3%
Latino	32,127	42,563	35,765	26,653	54,670
Latino %	21.4%	27.5%	22.5%	18.2%	35.1%
Asian	40,647	63,216	63,965	42,639	17,358
Asian %	27.1%	40.8%	40.3%	29.1%	11.1%
Black	2,080	2,670	2,929	1,921	5,346
Black %	1.4%	1.7%	1.8%	1.3%	3.4%

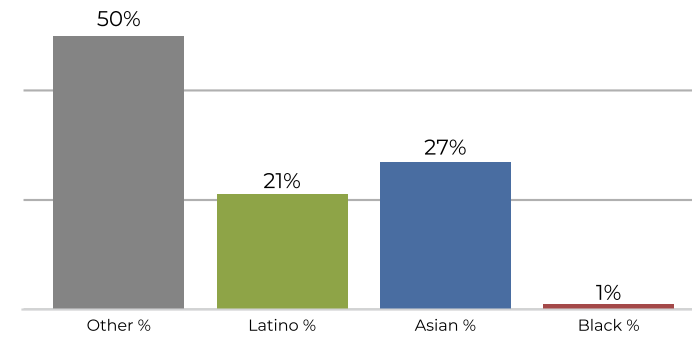
Citizen Voting Age Population (CVAP)

	A	B	C	D	E
Total CVAP	93,638	108,011	114,988	91,241	94,458
Other CVAP	55,720	38,052	46,678	57,312	60,572
Other CVAP %	59.5%	35.2%	40.6%	62.8%	64.1%
Latino CVAP	13,554	24,552	19,891	11,935	19,746
Latino CVAP %	14.5%	22.7%	17.3%	13.1%	20.9%
Asian CVAP	22,487	43,362	44,980	20,245	9,246
Asian CVAP %	24.0%	40.1%	39.1%	22.2%	9.8%
Black CVAP	1,877	2,045	3,439	1,749	4,894
Black CVAP %	2.0%	1.9%	3.0%	1.9%	5.2%

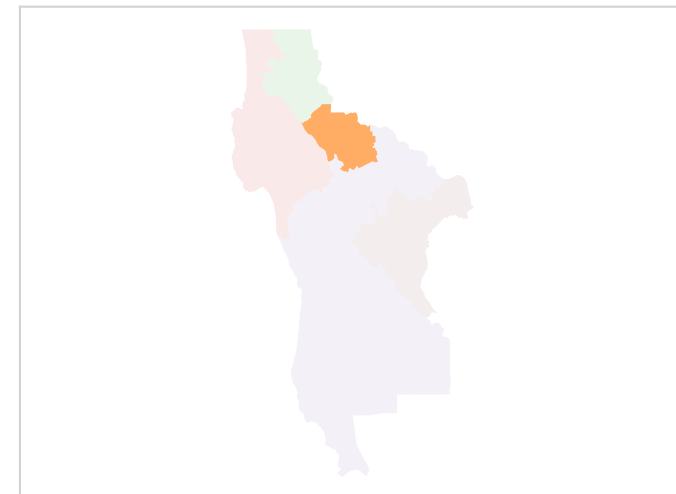
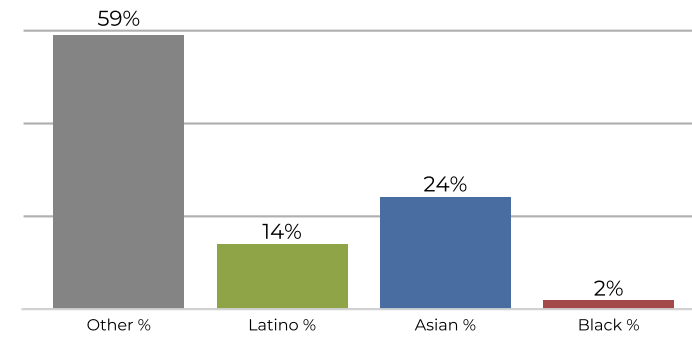
District A



2020 Census

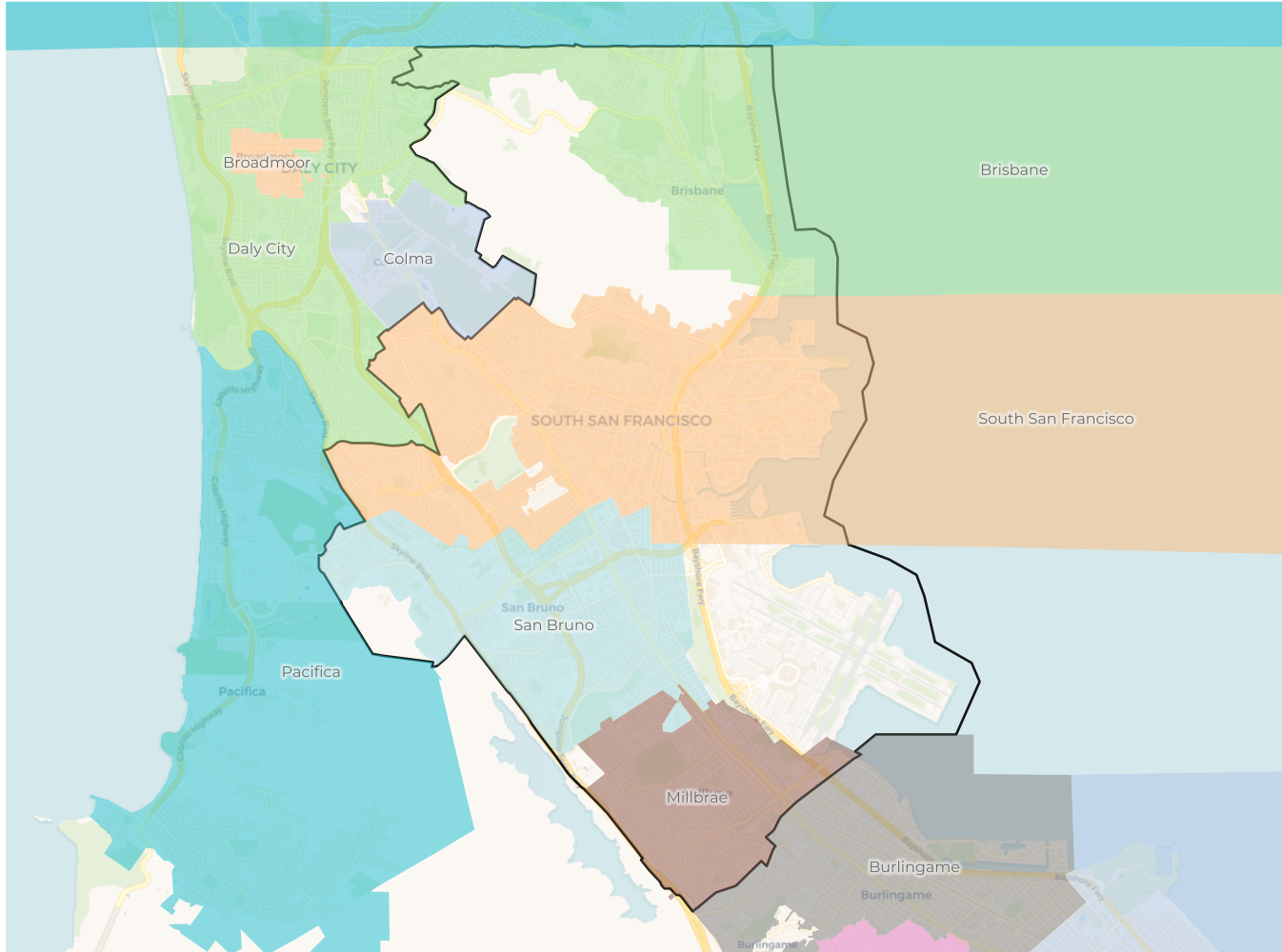


Citizen Voting Age Population

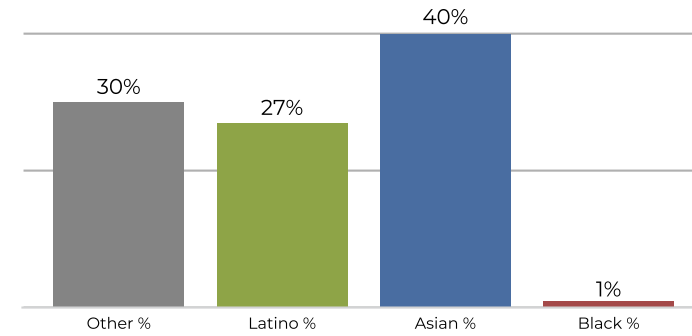


Population	Deviation	Deviation %	Other	Other %	Latino	Latino %	Asian	Asian %	Black	Black %
149,811	-3,272	-2.1%	74,957	50.0%	32,127	21.4%	40,647	27.1%	2,080	1.4%
Total CVAP	Other CVAP	Other CVAP %	Latino CVAP	Latino CVAP %	Asian CVAP	Asian CVAP %	Black CVAP	Black CVAP %		
93,638	55,720	59.5%	13,554	14.5%	22,487	24.0%	1,877	2.0%		

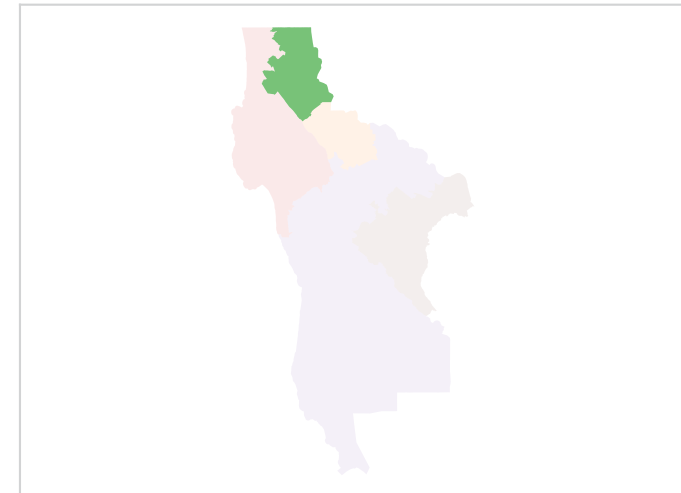
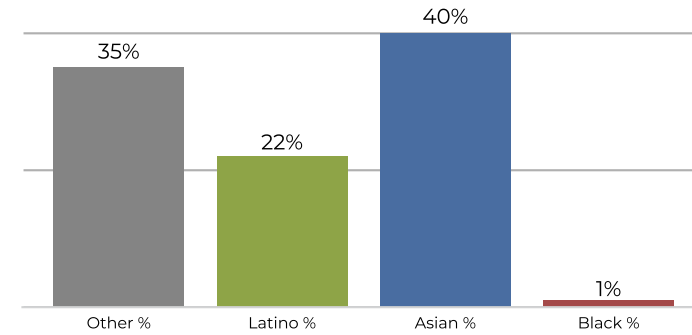
District B



2020 Census



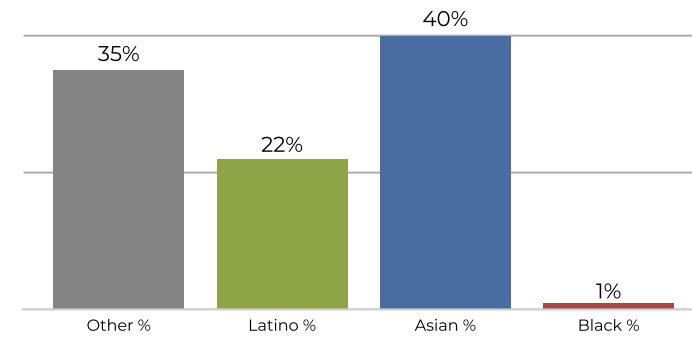
Citizen Voting Age Population



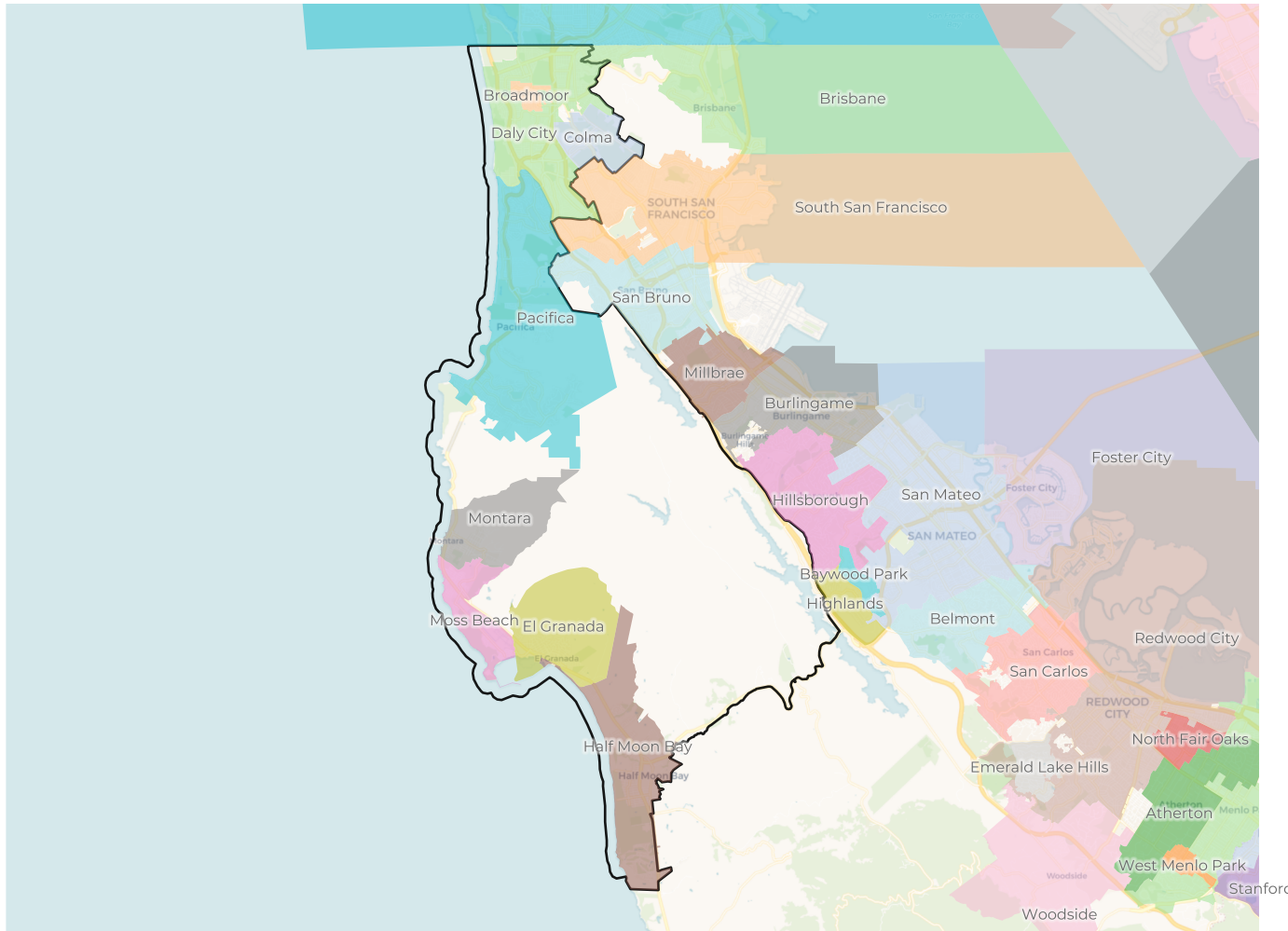
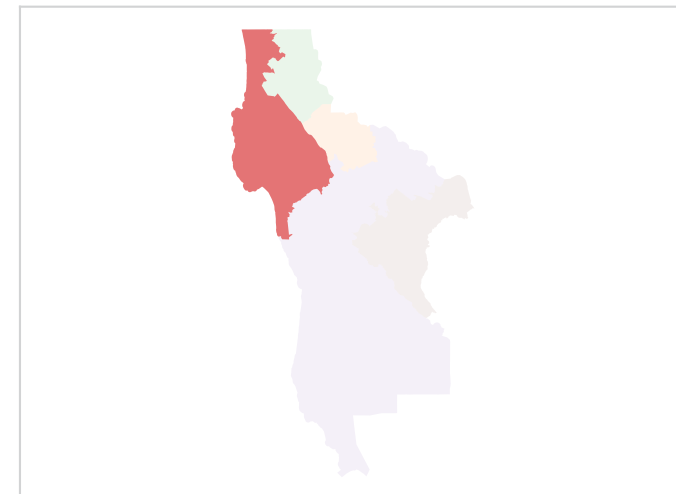
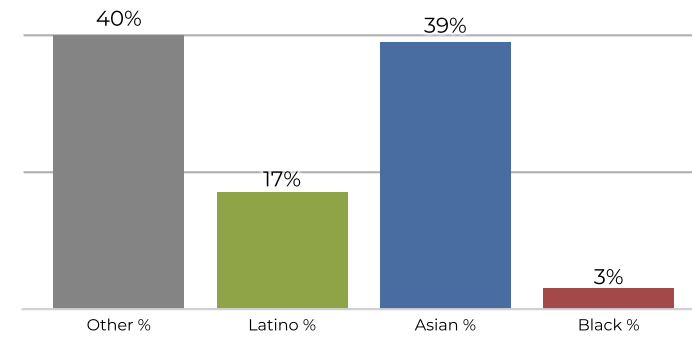
Population	Deviation	Deviation %	Other	Other %	Latino	Latino %	Asian	Asian %	Black	Black %
154,901	1,818	1.2%	46,452	30.0%	42,563	27.5%	63,216	40.8%	2,670	1.7%
Total CVAP	Other CVAP	Other CVAP %	Latino CVAP	Latino CVAP %	Asian CVAP	Asian CVAP %	Black CVAP	Black CVAP %		
108,011	38,052	35.2%	24,552	22.7%	43,362	40.1%	2,045	1.9%		

District C

2020 Census

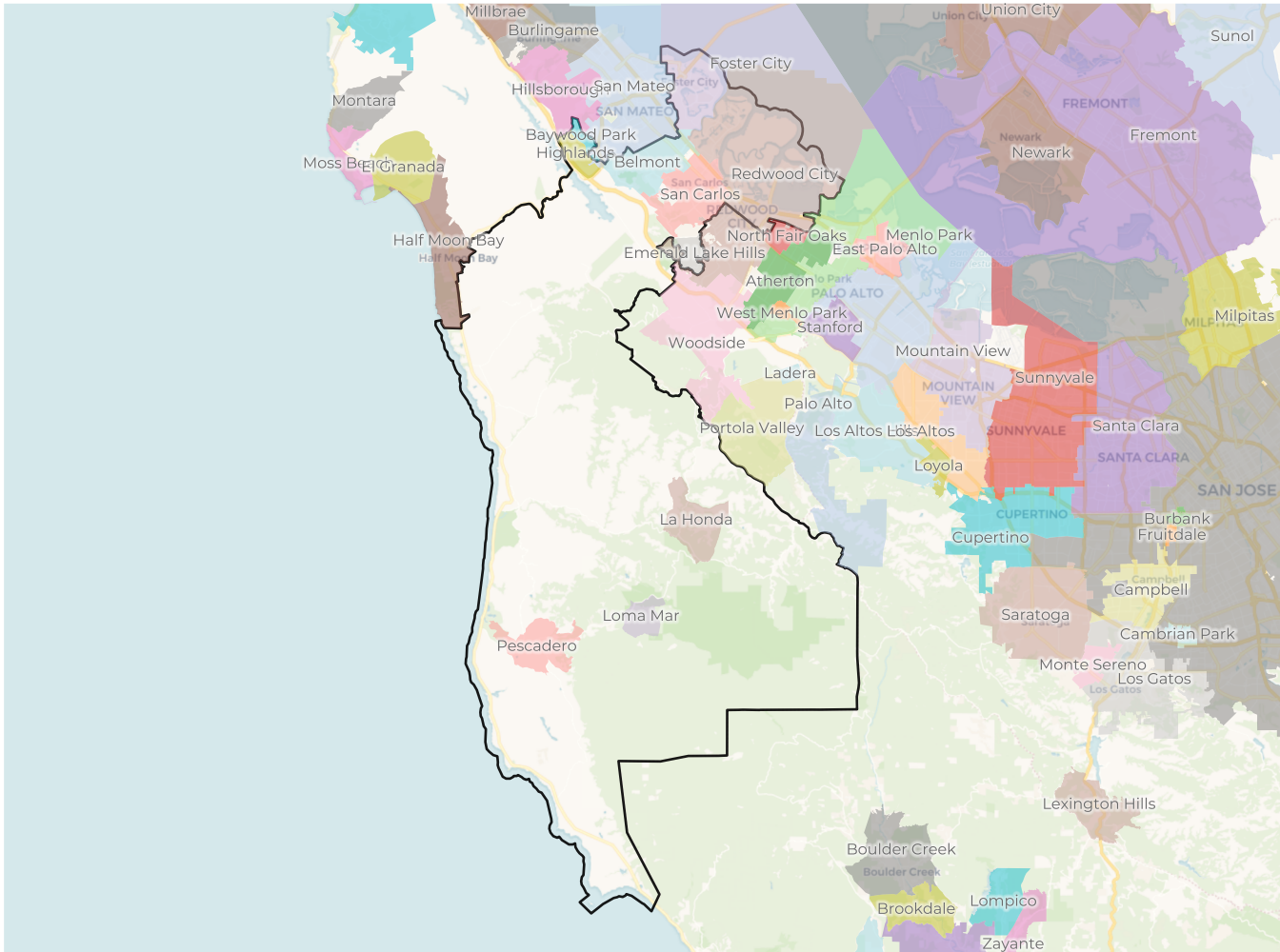


Citizen Voting Age Population

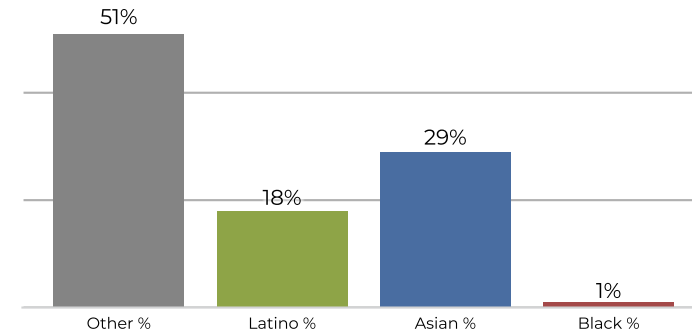


Population	Deviation	Deviation %	Other	Other %	Latino	Latino %	Asian	Asian %	Black	Black %
158,690	5,607	3.7%	56,031	35.3%	35,765	22.5%	63,965	40.3%	2,929	1.8%
Total CVAP	Other CVAP	Other CVAP %	Latino CVAP	Latino CVAP %	Asian CVAP	Asian CVAP %	Black CVAP	Black CVAP %		
114,988	46,678	40.6%	19,891	17.3%	44,980	39.1%	3,439	3.0%		

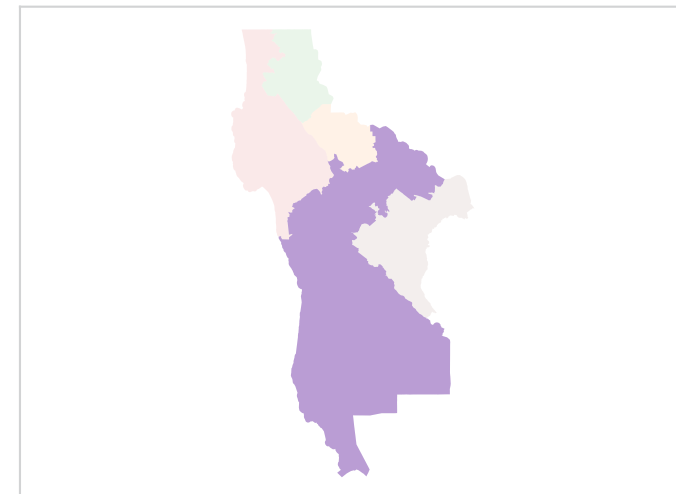
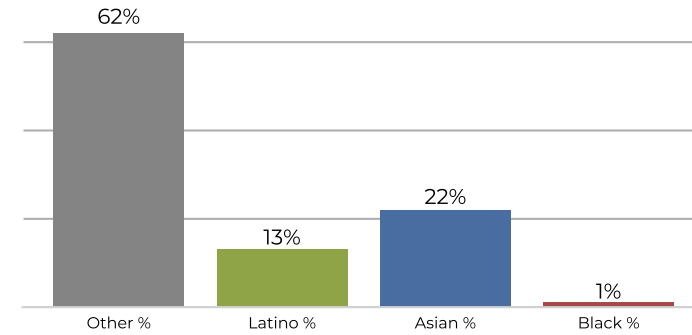
District D



2020 Census

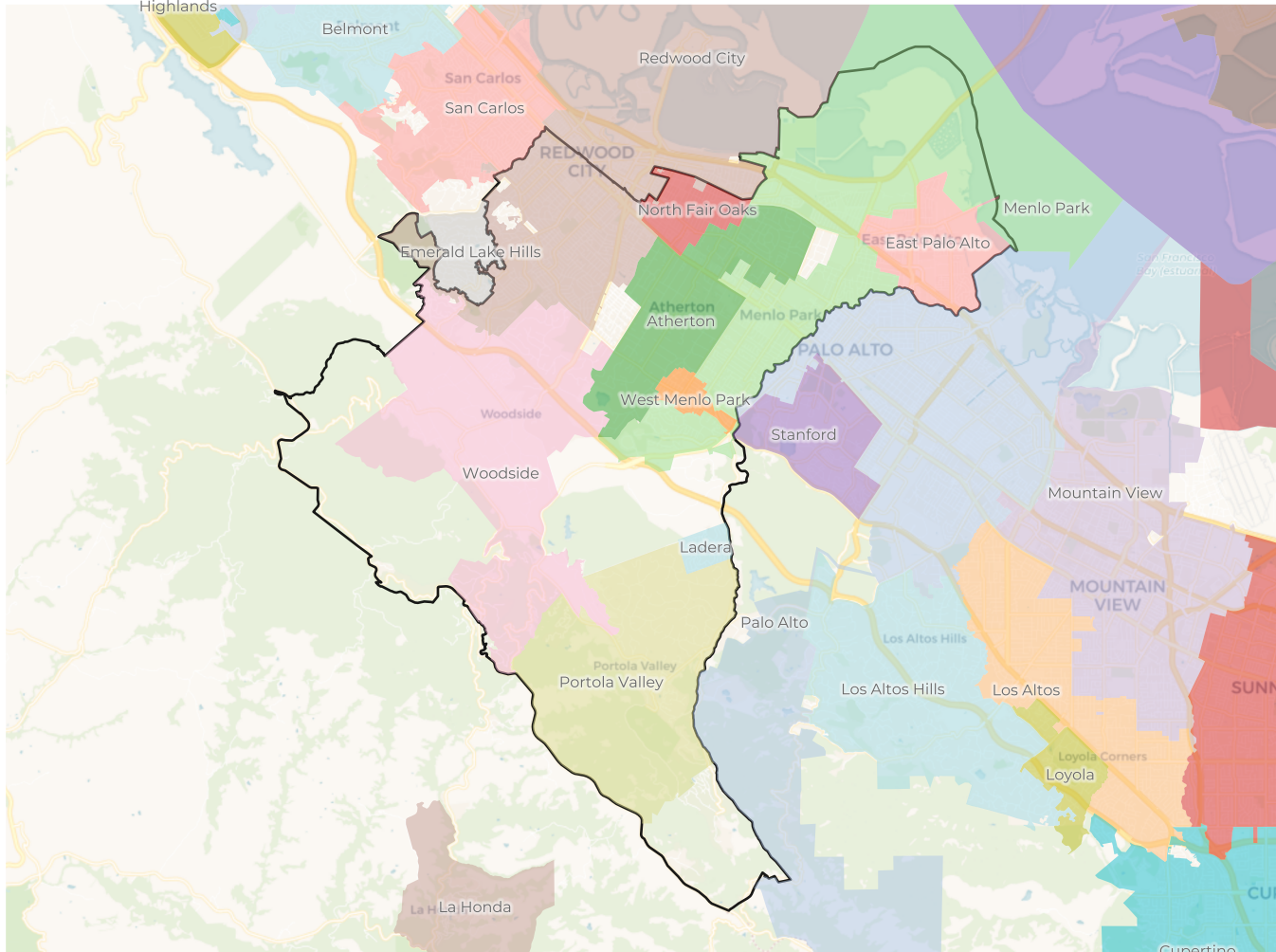


Citizen Voting Age Population

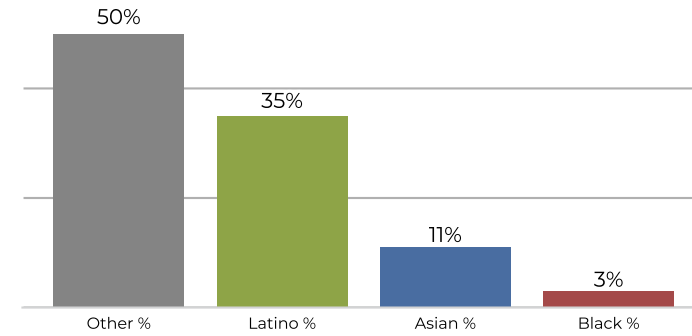


Population	Deviation	Deviation %	Other	Other %	Latino	Latino %	Asian	Asian %	Black	Black %
146,290	-6,793	-4.4%	75,077	51.3%	26,653	18.2%	42,639	29.1%	1,921	1.3%
Total CVAP	Other CVAP	Other CVAP %	Latino CVAP	Latino CVAP %	Asian CVAP	Asian CVAP %	Black CVAP	Black CVAP %		
91,241	57,312	62.8%	11,935	13.1%	20,245	22.2%	1,749	1.9%		

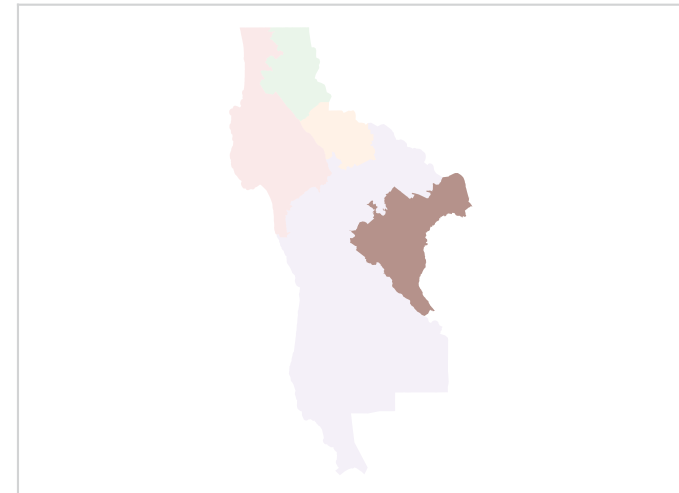
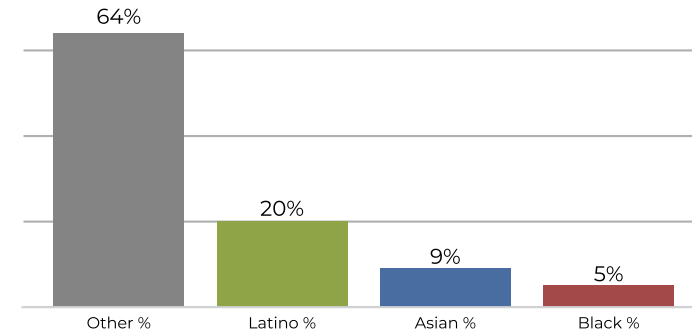
District E



2020 Census



Citizen Voting Age Population



Population	Deviation	Deviation %	Other	Other %	Latino	Latino %	Asian	Asian %	Black	Black %
155,725	2,642	1.7%	78,351	50.3%	54,670	35.1%	17,358	11.1%	5,346	3.4%
Total CVAP	Other CVAP	Other CVAP %	Latino CVAP	Latino CVAP %	Asian CVAP	Asian CVAP %	Black CVAP	Black CVAP %		
94,458	60,572	64.1%	19,746	20.9%	9,246	9.8%	4,894	5.2%		