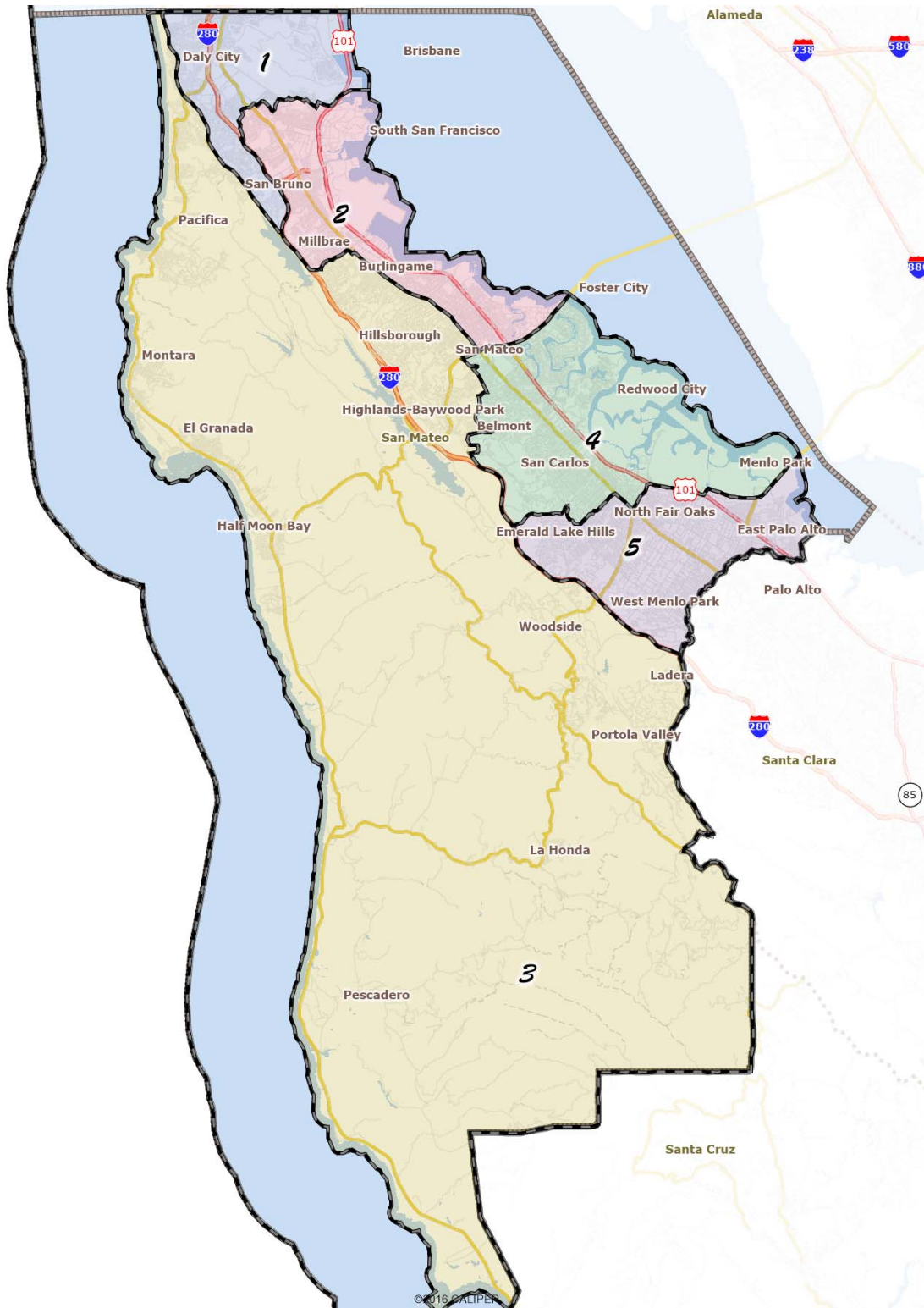


# San Mateo County Harbor District DRAFT PLAN A



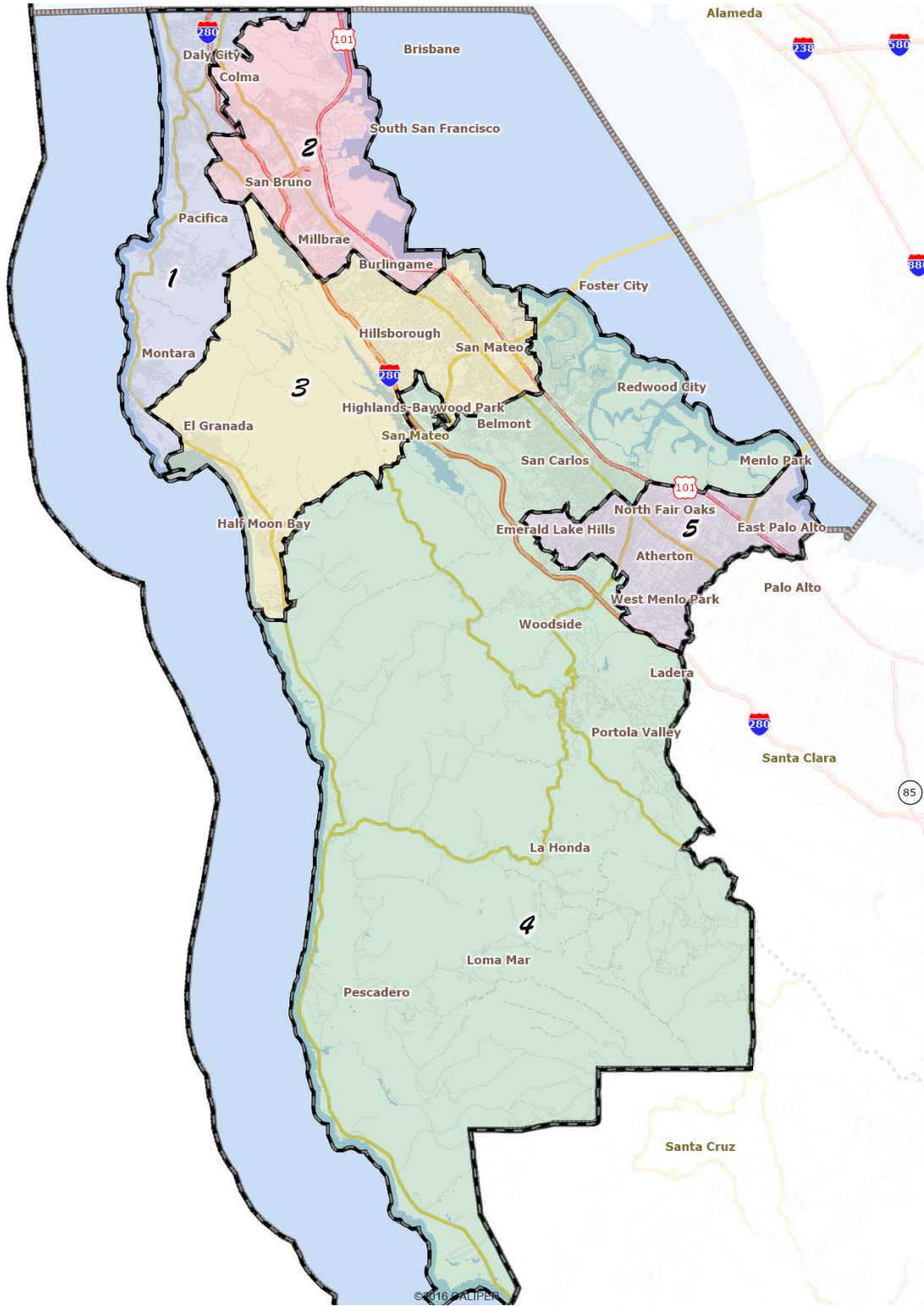
SEAT	Population	Deviation	CVAP	ASIAN CVAP	LATINO CVAP	BLACK CVAP
1	141,880	(1,810) -1%	96,830 68%	51,504 53%	17,304 18%	3,210 3%
2	142,498	(1,192) -1%	91,790 64%	22,050 24%	21,358 23%	2,407 3%
3	145,254	1,564 1%	106,049 73%	20,234 19%	11,599 11%	1,837 2%
4	146,271	2,581 2%	97,476 67%	19,314 20%	11,428 12%	2,217 2%
5	142,548	(1,142) -1%	81,155 57%	6,860 8%	19,001 23%	5,206 6%

# San Mateo County Harbor District DRAFT PLAN B



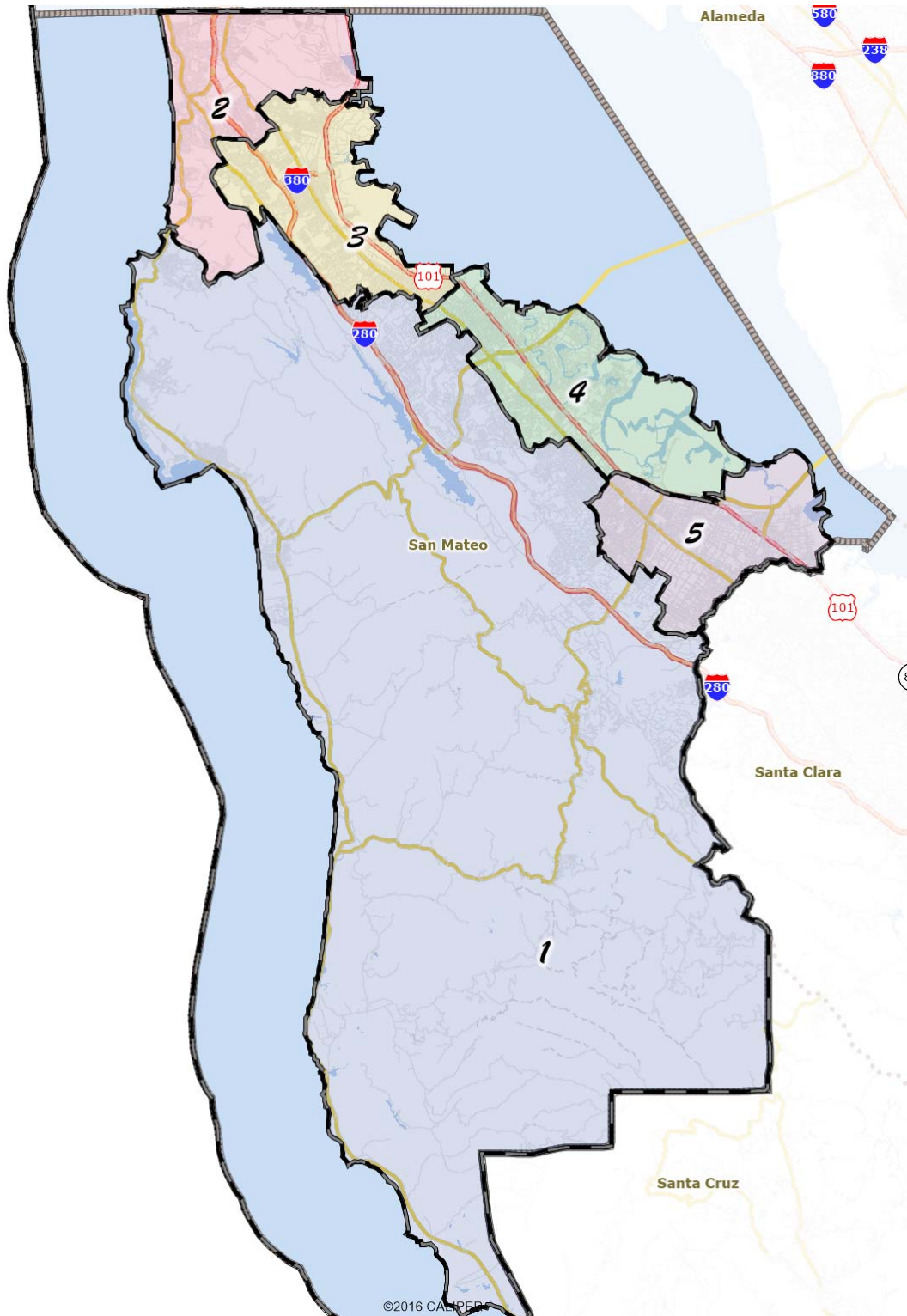
	Population	Deviation		CVAP		ASIAN CVAP		LATINO CVAP		BLACK CVAP	
1	145,504	1,814	1%	99,348	68%	46,976	47%	17,051	17%	3,613	4%
2	145,275	1,585	1%	99,987	69%	32,488	32%	20,979	21%	2,135	2%
3	145,871	2,181	2%	99,041	68%	16,422	17%	14,261	14%	1,884	2%
4	139,253	(4,437)	-3%	93,769	67%	17,216	18%	9,398	10%	2,039	2%
5	142,548	(1,142)	-1%	81,155	57%	6,860	8%	19,001	23%	5,206	6%

# San Mateo County Harbor District DRAFT PLAN C



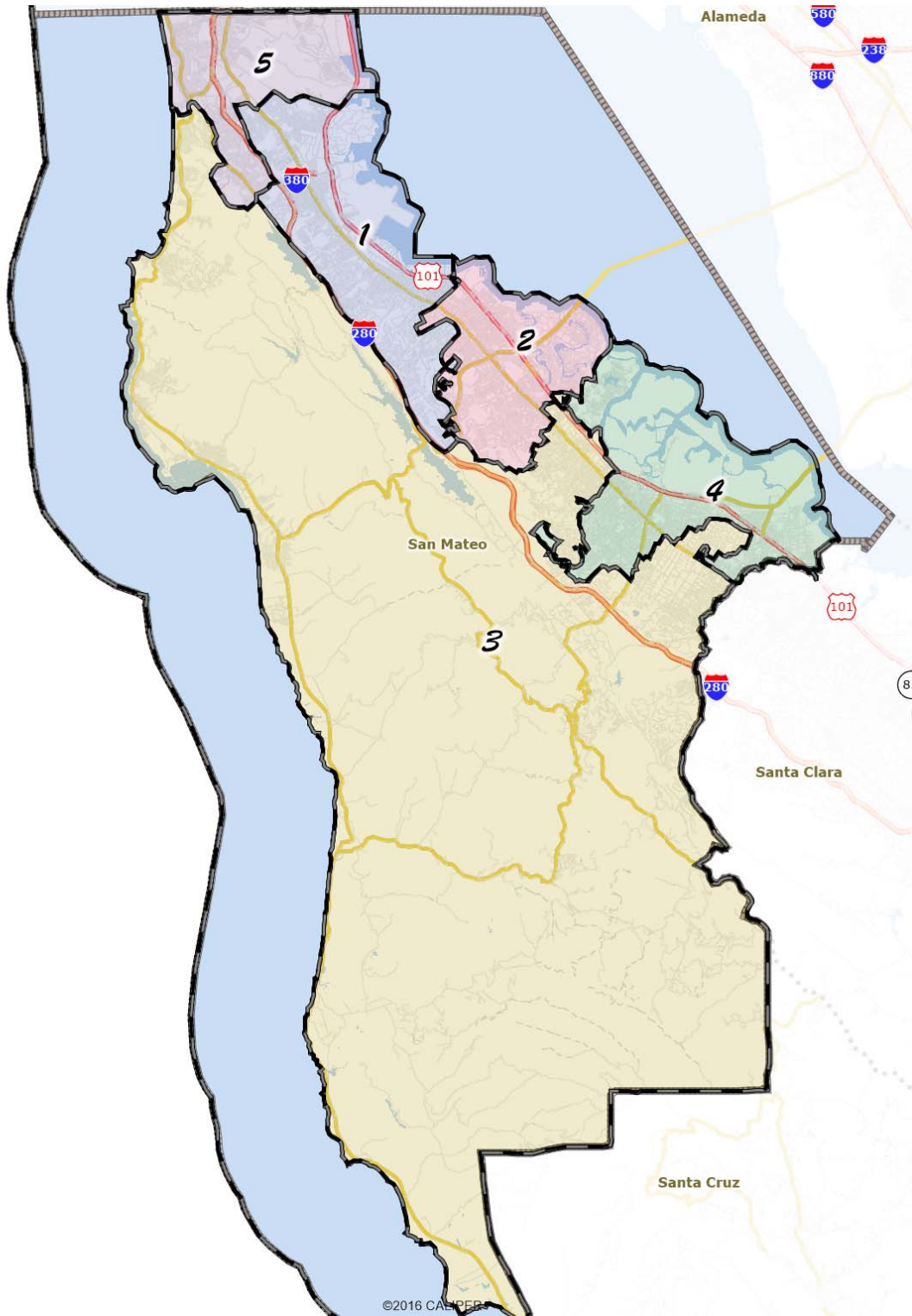
	Population	Deviation		CVAP		ASIAN CVAP		LATINO CVAP		BLACK CVAP	
1	147,171	3,481	2%	101,181	69%	44,870	44%	17,057	17%	3,464	3%
2	146,794	3,104	2%	100,685	69%	33,807	34%	21,464	21%	2,252	2%
3	143,138	(552)	0%	96,725	68%	17,209	18%	14,004	14%	1,922	2%
4	140,515	(3,175)	-2%	94,679	67%	17,370	18%	9,249	10%	2,033	2%
5	140,833	(2,857)	-2%	80,030	57%	6,706	8%	18,916	24%	5,206	7%

# San Mateo County Harbor District San DRAFT PLAN D (Sarsfield/Public Submission)



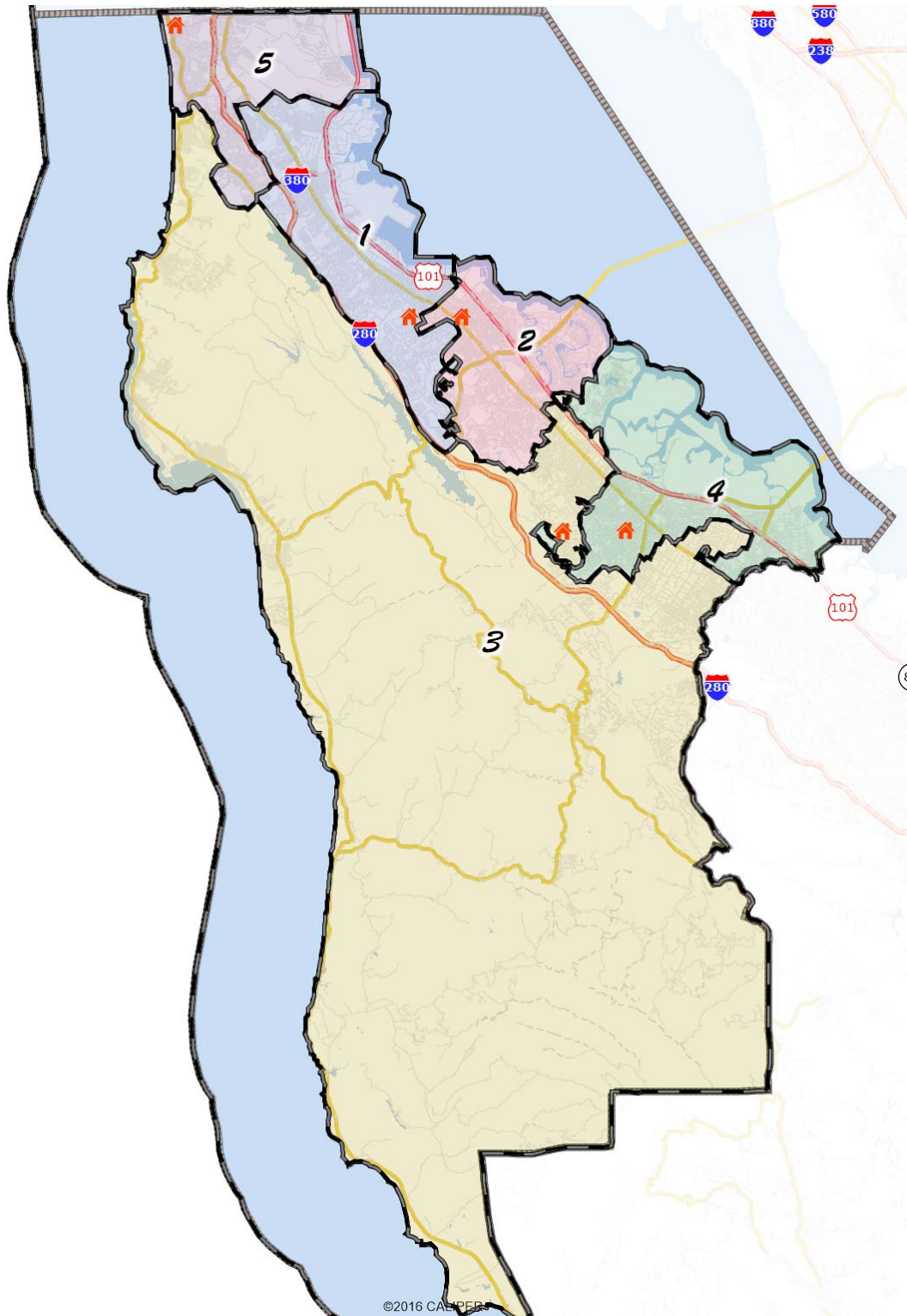
	Population	Deviation		CVAP		ASIAN CVAP		LATINO CVAP		BLACK CVAP	
1	142,409	(1,281)	-1%	104,453	73%	12,459	12%	9,837	9%	950	1%
2	149,136	5,446	4%	101,313	68%	48,964	48%	18,339	18%	3,703	4%
3	143,548	(142)	0%	97,991	68%	31,151	32%	19,242	20%	2,021	2%
4	141,043	(2,647)	-2%	91,693	65%	20,691	23%	13,428	15%	2,690	3%
5	142,315	(1,375)	-1%	77,850	55%	6,697	9%	19,844	25%	5,513	7%

# San Mateo County Harbor District San Mateo County Supervisor Districts



	Population	Deviation		CVAP		ASIAN CVAP		LATINO CVAP		BLACK CVAP	
1	141,738	(1,952)	-1%	95,489	67%	25,698	27%	18,361	19%	1,480	2%
2	148,904	5,214	4%	98,876	66%	21,429	22%	13,302	13%	2,565	3%
3	147,437	3,747	3%	106,935	73%	11,998	11%	11,489	11%	1,625	2%
4	139,043	(4,647)	-3%	75,418	54%	7,622	10%	20,877	28%	5,645	7%
5	141,331	(2,359)	-2%	96,583	68%	53,215	55%	16,661	17%	3,562	4%

# San Mateo County Harbor District San Mateo County Supervisor Districts (with incumbents)



	Population	Deviation		CVAP		ASIAN CVAP		LATINO CVAP		BLACK CVAP	
1	141,738	(1,952)	-1%	95,489	67%	25,698	27%	18,361	19%	1,480	2%
2	148,904	5,214	4%	98,876	66%	21,429	22%	13,302	13%	2,565	3%
3	147,437	3,747	3%	106,935	73%	11,998	11%	11,489	11%	1,625	2%
4	139,043	(4,647)	-3%	75,418	54%	7,622	10%	20,877	28%	5,645	7%
5	141,331	(2,359)	-2%	96,583	68%	53,215	55%	16,661	17%	3,562	4%